

HERITAGE ANKARA

AN INSTITUTION

**FOR SUSTAINABLE HERRITAGE
MANAGEMENT**

ARCH 401 FALL 2023
ARCHITECTURAL DESIGN STUDIO V
—
SELECTED WORKS

2023 Arch 401 STUDIO INSTRUCTORS:

Section 1 - Yiğit Acar (Course Coordinator)

Section 2 - Meral Özdengiz Başak

Section 3 - Ezgi İşbilen

Section 4 - Zeynep Ege Odabaşı

Section 5 - Melis Sözen

Teaching Assistant: Elifnaz Kancan

Design and Editing: Elifnaz Kancan, 2023, Ankara

e-book: arch.bilkent.edu.tr



Bilkent University



We want to express our sincere thanks for your contributions to our course.

Ali Sinan, Alp Giray Köse, Aslıhan Günhan Çalışkan, Çağdaş Eren Bilgiç, Caner Arıkboğa, Damla Tarman, Deniz Üçer Erduran, Deniz Üçer, Dicle Kumararslan, Ekin Çoban Turhan, Elif Selana Ayhan, Elif Yılmaz, Erald Varaku, Eren Başak, Ezgi Nur Güngör, Gizem Deniz Güneri Söğüt, Gökçe Ulusoy Gür, Hasan Hüseyin Özdemir, Meriç Erdoğan, Mete Işıkoğlu, Mustafa Akın Aydeğer, Nihan Büşra Kezer, Onur Lami Yalman, Onur Özkoç, Özge Selen Duran, Özgün Özçakır, Sare Nur Avcı, Segah Sak, Seray Türkay, Zühre Sü Gül.

PROJECT DEFINITION

Instructors:

Yiğit Acar,
Meral Özdengiz Başak
, Ezgi İşbilen, Zeynep
Ege Odabaşı, Melis
Sözen

Teaching Assistant:

Elifnaz Kancan



Urban areas constantly decay through disasters or as a result of urban development processes over centuries. As they decay they are also constantly recovered, layer on top of another. This process of decay and recovery is not a smooth one, partial remains of a layer continue to exist while the new layer is taking form. These remains are sometimes physical, like buildings, structures, or landscape elements; and sometimes cultural, like property lines, sacred spaces, or stories. As centuries go by, the cycle of decay and recovery creates a rich collage of spaces. Being the oldest part of a city, the historical core is typically the best place to experience this condition. The historical core of Ankara, Kale (Citadel) District, is no exception in this regard.

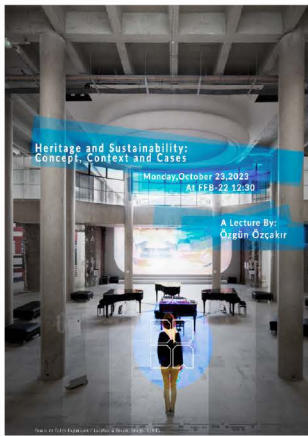
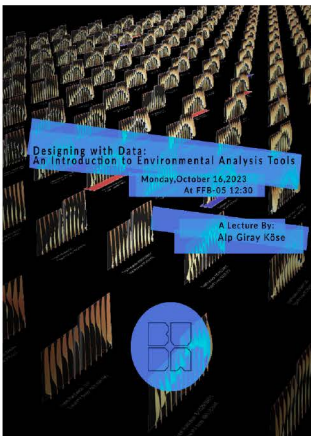
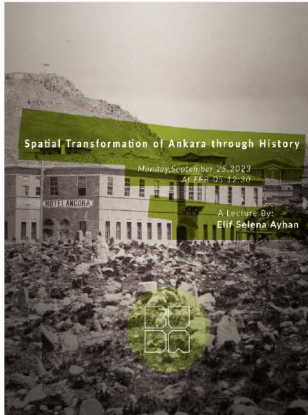
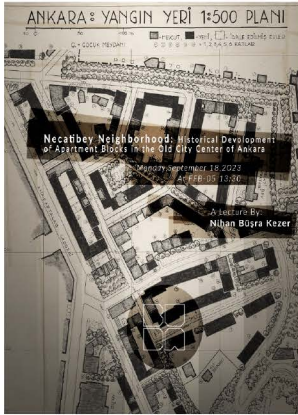
Currently the district is in its rehabilitation stage. The process of rehabilitation in Ankara has been ongoing since 1980s. Beginning with Ulus Historical City Center Conservation and Rehabilitation Plan (1989), the design competition for Hacıbayram Square (1991), the competition for the Kale District (1988), the competition for Saraçlar Market (1992), the transformation of Hamamönü and Hamam Arkası districts, the later transformation of Hacıbayram district, the current attempts of transformation within the citadel, the restoration of Roman Theatre and the Roman Baths, the conservation and re-use projects of Ulus İşhanı and Anafartalar Çarşısı, founding of a

a number of cultural institutions such as Çengel Han Rahmi Koç Technology Museum, Erimtan Archeology Museum, Cer-Modern and Sığınak are some of the significant milestones in this process.

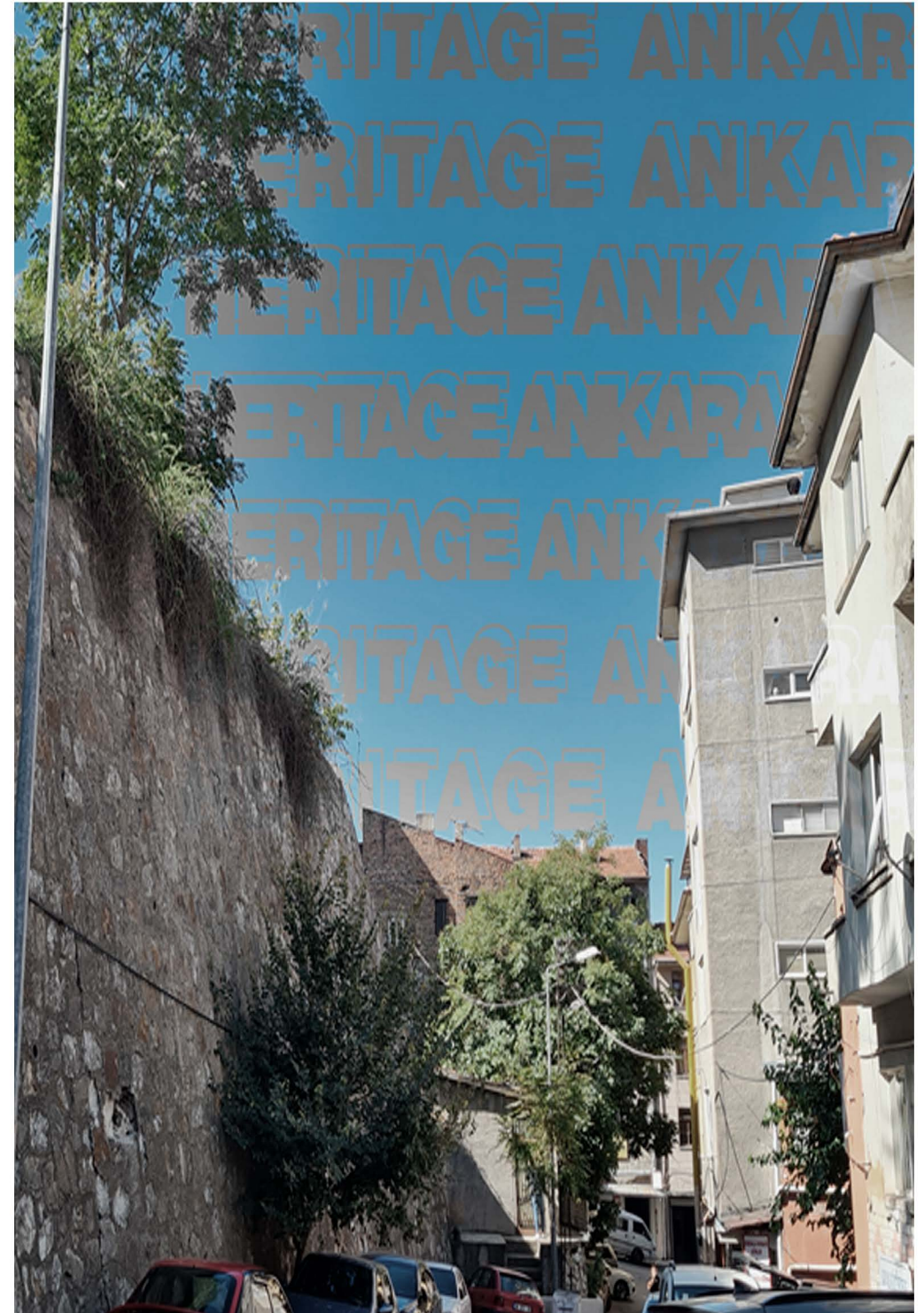
In line with the intricate nature of the planning and design problem at hand, such processes are almost never ideal. Problems or conflicting interests/ideas/ideological positions surface through the long duration of rehabilitation. Due to the complex nature of actor networks, technical, legal, and social complexities of the problem there is a need for institutional structures that can facilitate communication between different stakeholders, manage technical knowledge flows, and oversee and document processes. Such institutions are established all around the world to coordinate and direct conservation and restoration processes to ensure the sustainable management of heritage areas.

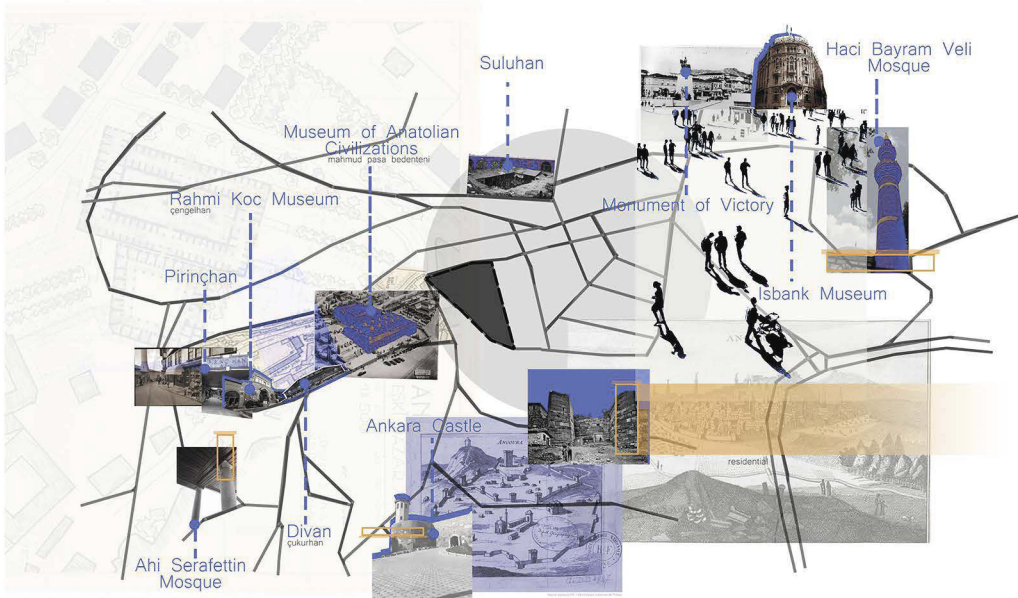
Heritage Ankara is one such institutional program that would expand the municipality's already ongoing efforts in conservation and restoration processes in Ankara, enabling to have a public face and strong community relations.

LECTURES



The lectures provide a diverse exploration of Ankara's urban and architectural journey. They begin with an in-depth look at the historical development of residential blocks within the city's old center, transitioning to a broader analysis of Ankara's spatial transformation through its history. Subsequent discussions pivot to the modern challenges of conserving and repurposing architectural heritage, followed by an examination of environmental analysis tools in design. The series also delves into the nexus between heritage and sustainability, and concludes with innovative concepts for event space design. Together, these lectures illustrate a multifaceted approach to understanding and shaping the urban landscape of Ankara.





Collage 1: Alize Tuncel



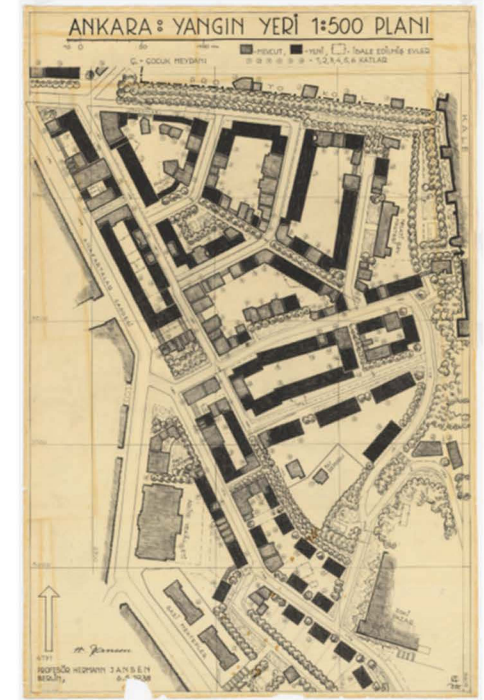
Collage 2: Batuhan Tatli

The Necatibey Neighbourhood, located near the citadel in Ankara's Ulus district, is an area steeped in history, bordered by Anafartalar, Hisar Parki, and İpek Streets. This neighborhood is known for its vibrant social life and is closely associated with some of the city's most famous marketplaces. The main commercial areas in the city, such as At pazari, Saman pazari, Koyun pazari, Tahtakale, and Karacaoğlan Marketplace, are all situated in or around the Ulus district, playing a significant role in the area's economy.

In addition to its commercial significance, the Necatibey Neighbourhood is surrounded by several important historical sites, including the Roman Theatre, the Monumentum Ancyranum (Temple of Augustus and Rome), and the Ankara Citadel, which was the city center until the Republican Period. The area's history is notably marked by the great fire of 1916, which started in Hisar Parki, an Armenian neighborhood, and spread to the nearby bazaars. This event was so impactful that by 1924, the affected area was known as 'Harik Mahali' or 'the fire area'.

In terms of urban planning, the proposal for the city included maintaining the citadel as a central landmark, with the city designed in a circular layout around it. A main arterial road, Atatürk Boulevard, was planned to connect the old city center (Ulus) with the new city center (Yenişehir). The proposal also included an industrial zone between the railway station and the old city center, with areas like Cebeci and İskitler envisioned as future urban areas, and the development of vineyard houses in Çankaya.

The Ankara Castle district in the Altındağ district is another historic area, surrounded by the walls of Ankara Castle, a relic of the Roman, Seljuk, and Ottoman Empires. The district is characterized by "Ankara houses," built in various periods within the castle. These houses, designed to adapt to the steep terrain and seasonal changes, feature thick walls and small windows on the lower floors for winter, and thinner, airy walls on the upper floors for summer. The district is also home to the Alaaddin Mosque, Ankara's oldest mosque, and a museum, making it a popular destination for both tourists and locals. Adjacent to these historical neighborhoods is the Anatolian Civilizations Museum, a significant cultural institution in Ankara. Established in 1921 by Mustafa Kemal Atatürk, the founder of the



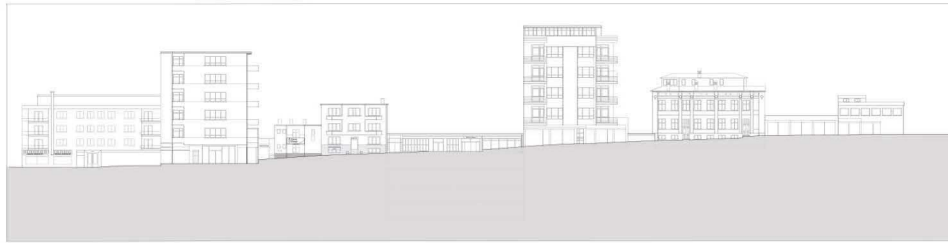
Jansen Plan

Turkish Republic, the museum is dedicated to preserving and showcasing the heritage of the various civilizations that have thrived in Anatolia. The museum's collection, which includes over 200,000 artifacts, spans a vast timeline from the Paleolithic era to the beginning of the Ottoman Empire. Its exhibits provide a comprehensive view of the Hittite, Phrygian, Urartian, Greek, Roman, and Byzantine periods, offering visitors a deep dive into the diverse and rich history of Anatolia. The museum's significance is underscored by its selection as the European Museum of the Year in 1997, a testament to its role in cultural preservation and education. This area, with its blend of historical, cultural, and urban significance, forms the backdrop for the project area, offering a unique context for any developmental or preservation efforts.



PROGRAM

ARCH 401- ARCHITECTURAL DESIGN STUDIO V
Heritage Ankara: An Institution for Sustainable Heritage Management

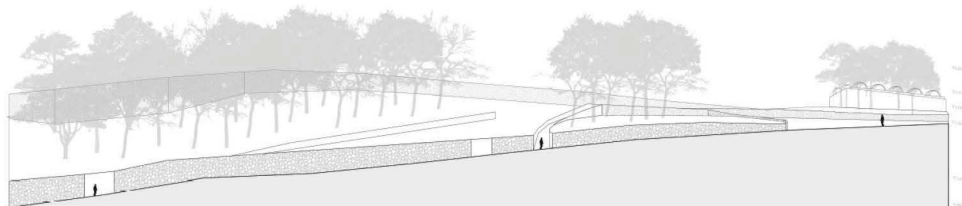


KARDEŞLER STREET ELEVATION 1/150



KARDEŞLER STREET ELEVATION FROM PHOTOS 1/150

ARCH 401- ARCHITECTURAL DESIGN STUDIO V
Heritage Ankara: An Institution for Sustainable Heritage Management



İPEK STREET ELEVATION 1/150



İPEK STREET ELEVATION FROM PHOTOS 1/150

Heritage Ankara: An Institution for Sustainable Heritage Management

Heritage Ankara is a fictional institution in close proximity to Ankara Citadel. The design problem is conceived as an incentive to review and contemplate urban and architectural conservation attempts and processes in Ankara.

The program for the building addresses the current discussions and agenda of the municipality. The design problem has three main components: **Heritage Ankara Offices, Creative Cluster, and Urban Commons.**

Program:

Heritage Ankara, 30%: Office spaces for staff, archive space with storage, documentation office, study area, and meeting spaces for 10-20 people.

Creative Cluster, 30%: Grant offices for design startups, fabrication lab(s) (has to have service access and ventilation), meeting spaces for 10-20 people.

Urban Commons, 30%: Event Space that would allow for a variety of public events such as performances, exhibitions, or large gatherings up to 300 people. Includes an industrial kitchen for large events, storage spaces, and commercial spaces to generate income for the institute.

Building management and services, %10: Spaces for management offices, environmental systems and storage.

Main functions should be resolved within 4000-5000 m²
Circulation should not exceed 15% of programmed area.

Shuttle drop-off point and short period waiting space for 7 tourist shuttles, parking spaces for 10 cars: can be open-air, closed or semi closed spaces; should follow the standards for circulation of vehicles and people. The total building area should be between 6000-7000 m²



KONYA STREET ELEVATION FROM PHOTOS 1/150

JURIES

Three studios are operated by five instructors.

Section 1 and Section 5 (Yiğit Acar and Melis Sözen)

Section 3 and Section 4 (Ezgi İşbilen and Zeynep Ege Odabaşı)

Section 2 (Meral Özdengiz Başak)

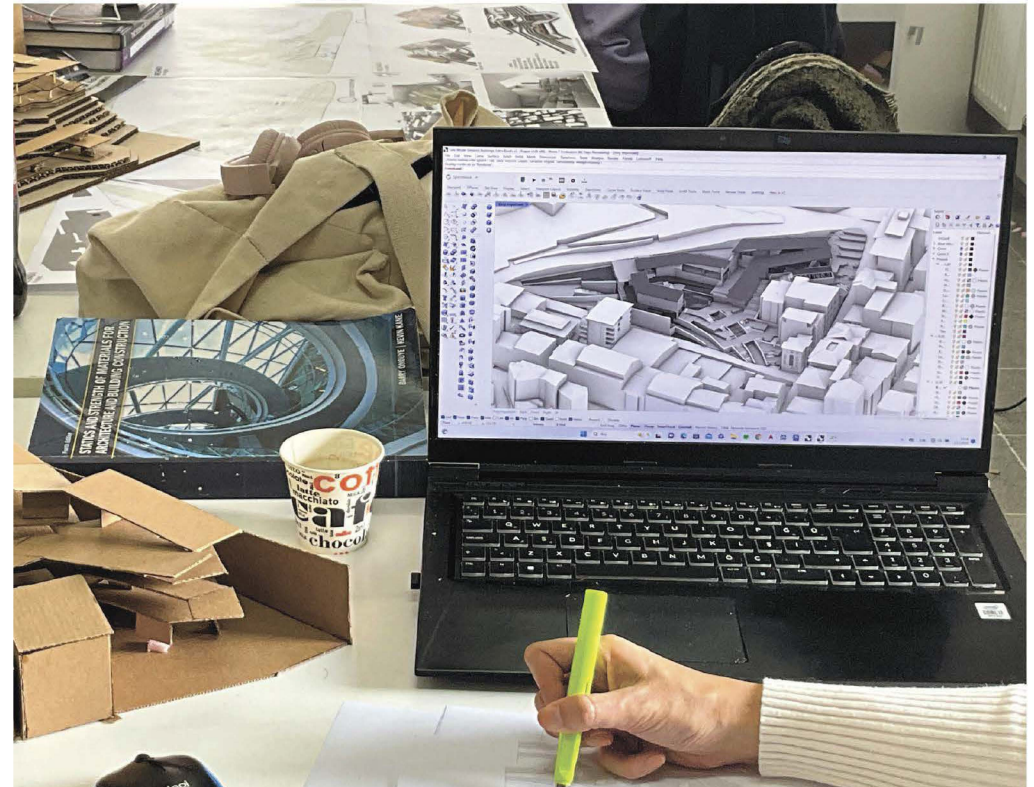
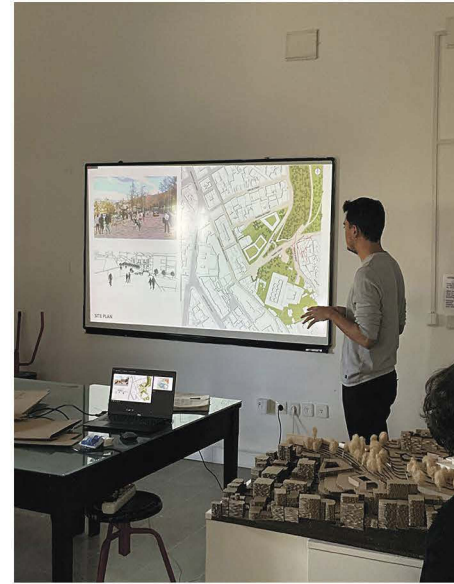
There had been four Juries:

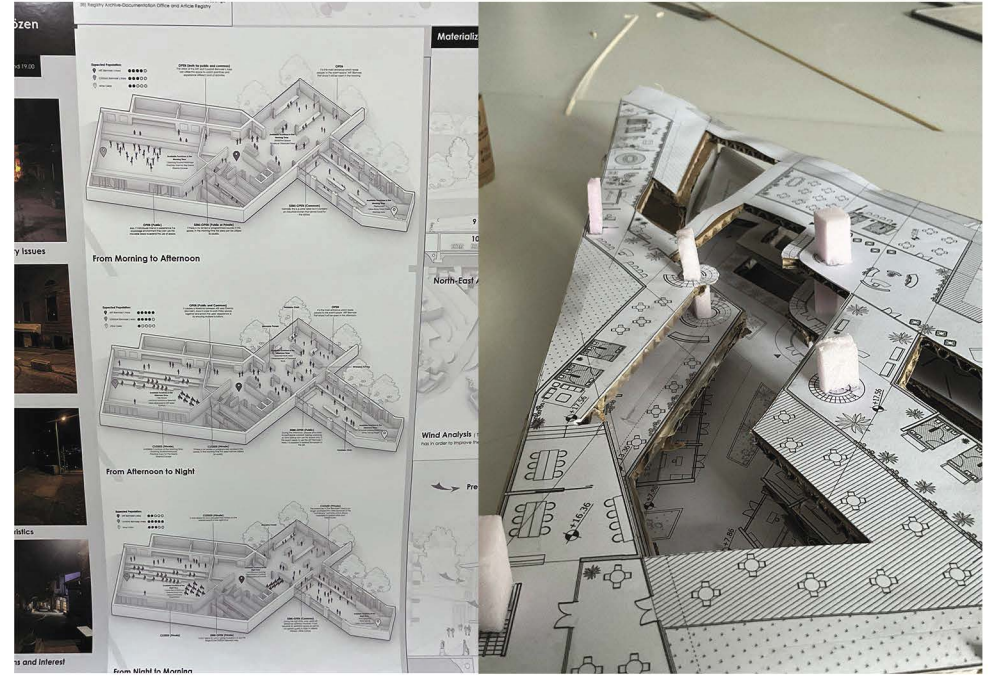
Pin Up 1 13.10.2023

Pin Up 2 13.11.2023

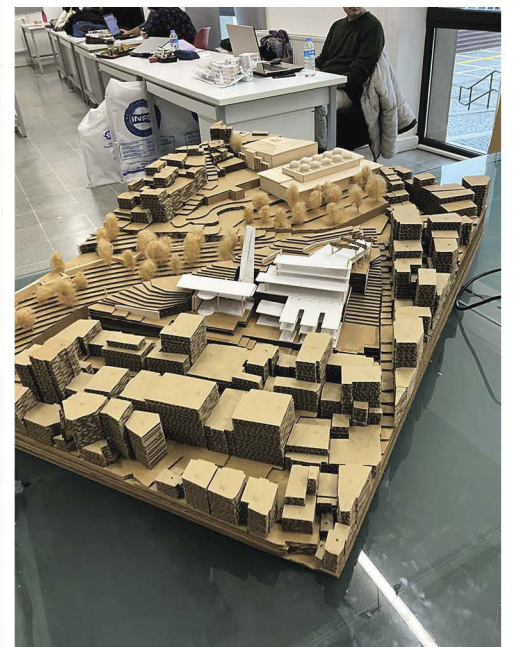
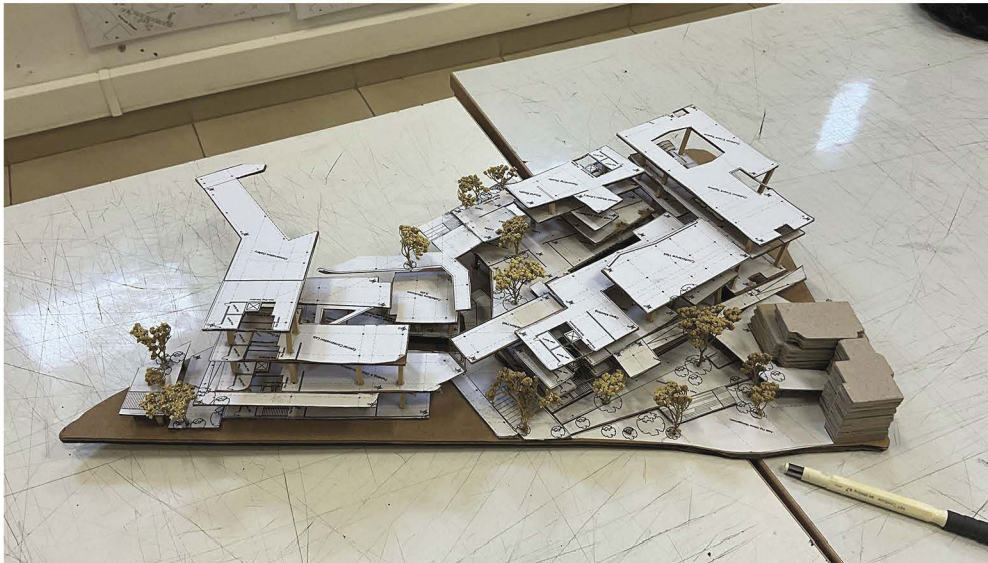
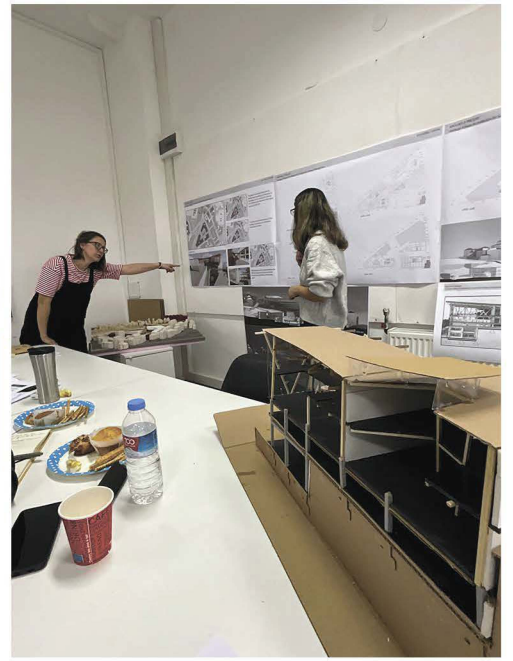
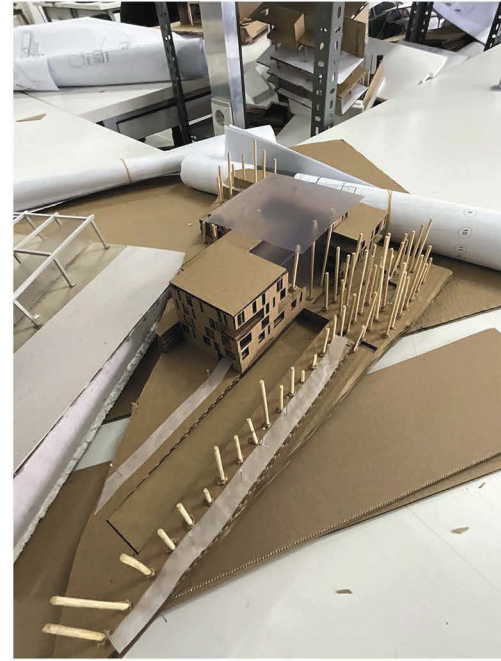
Pre-jury 08.12.2023

Final Jury 19.12.2023



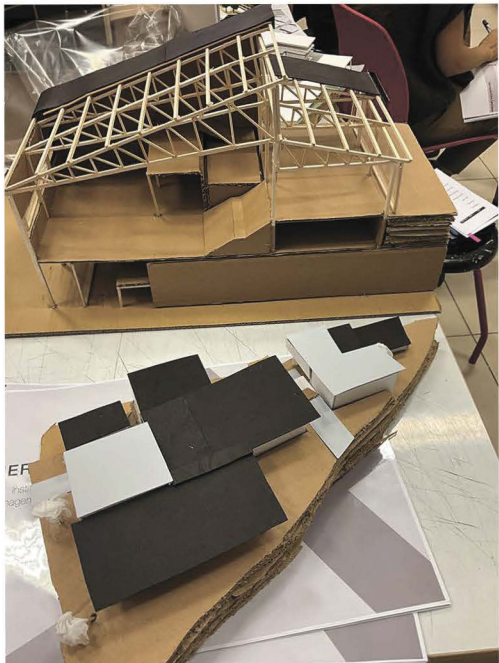


JURIES

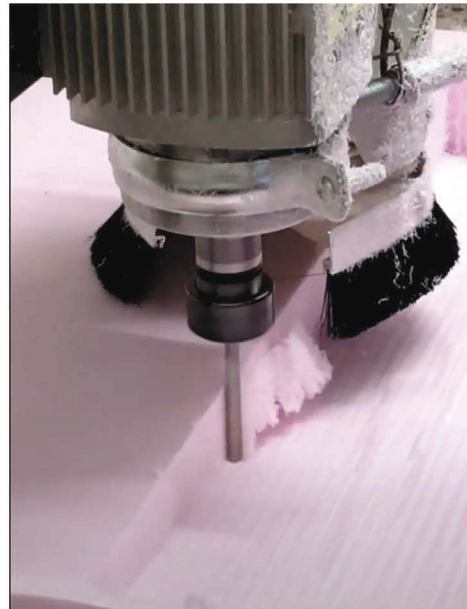
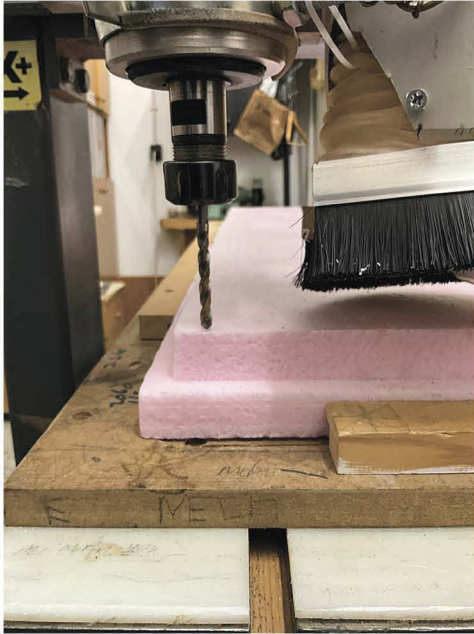


JURIES

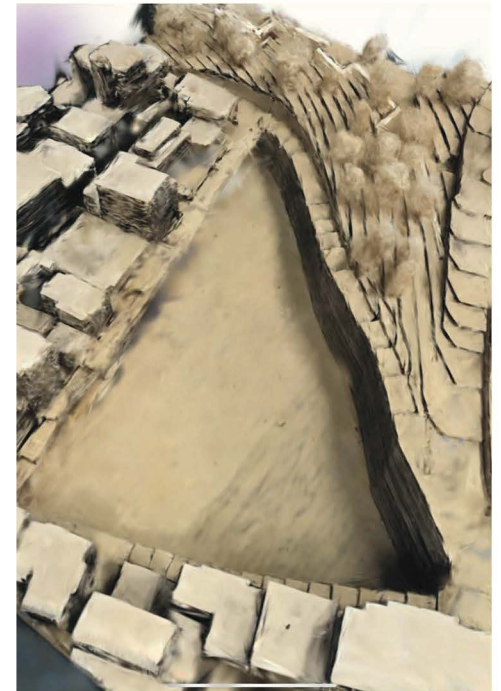
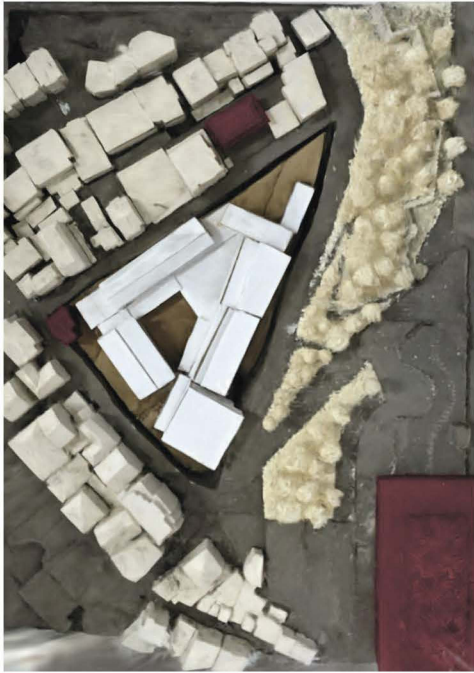




PHYSICAL MODEL

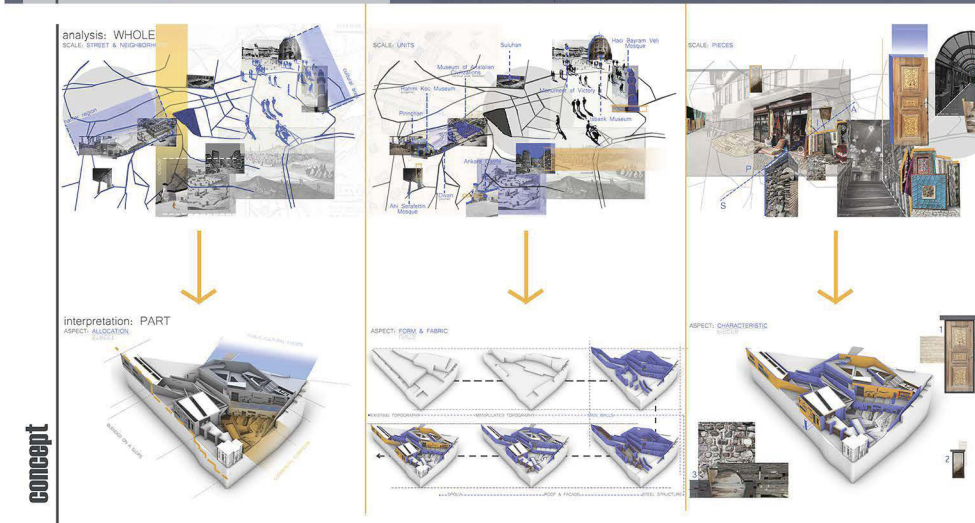
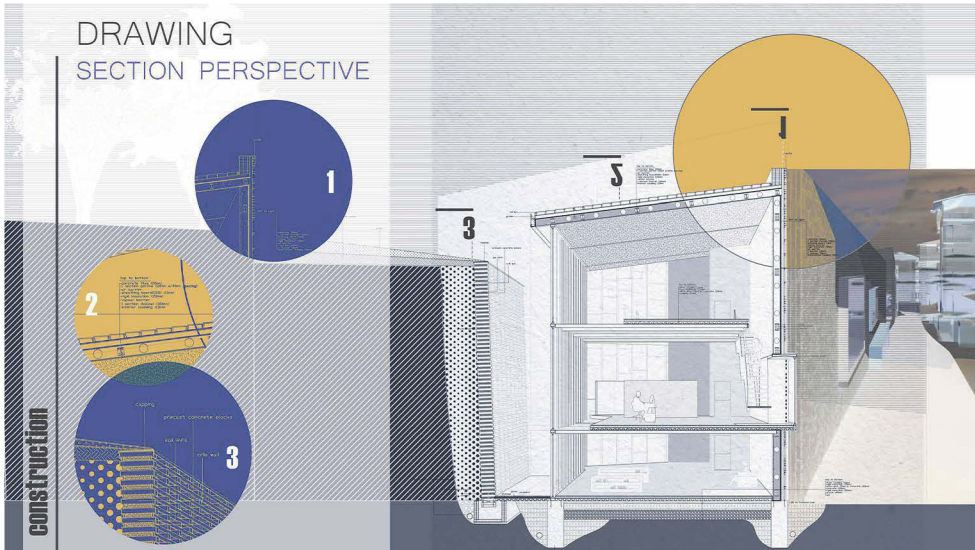


PHYSICAL MODEL



PROJECTS

spoliAncyra | Alize Tuncel | Section 1 | Yiğit Acar, Melis Sözen



The ultimate goal of this project is creating a place for a heritage institution for Ankara which is designed to enhance the conservation work. The program covers the musts of a sustainable conservation approach including public spaces for participation. The concept is derived during a natural search for the two main principles: authenticity and integrity. After a discussion of part-whole relationship in the context of authenticity, the analysis of the surrounding –especially the citadel area- led to a specific wall typology using the spolia from the antique stores and destroyed buildings in Ulus besides a living fabric within those walls.

VIEW:
FROM THE SHUTTLE DROP-OFF POINT



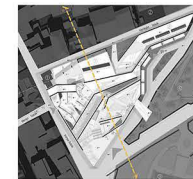
perspectives

VIEW:
FROM THE COMMERCIAL CORRIDOR

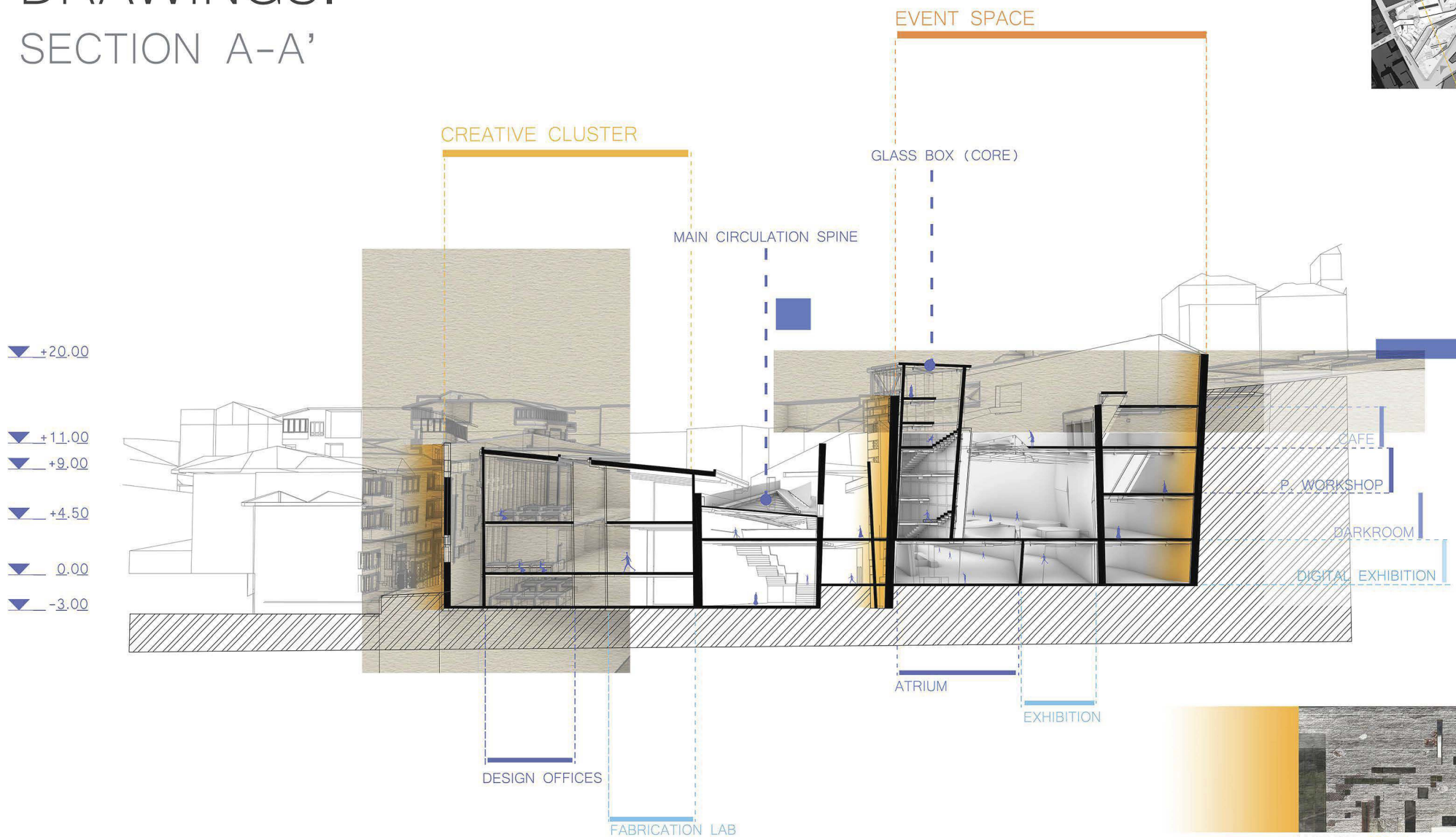


perspectives

DRAWINGS: SECTION A-A'



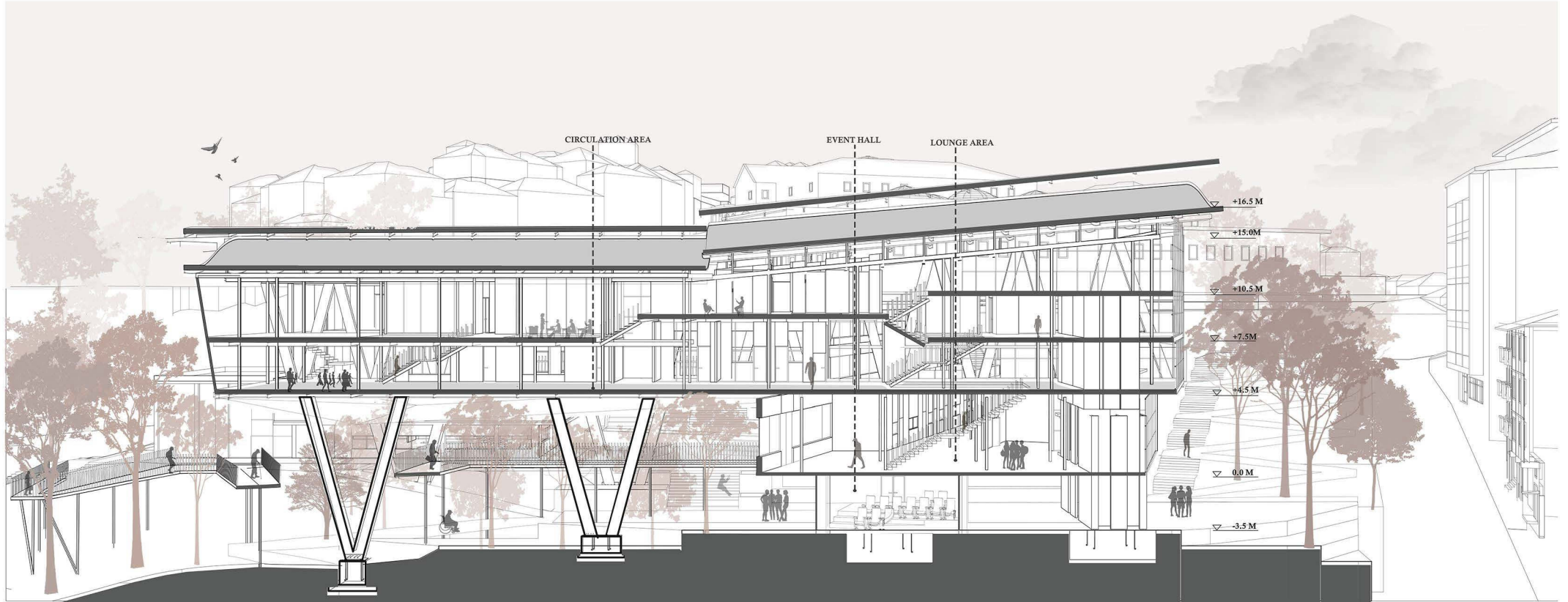
KEY MAP



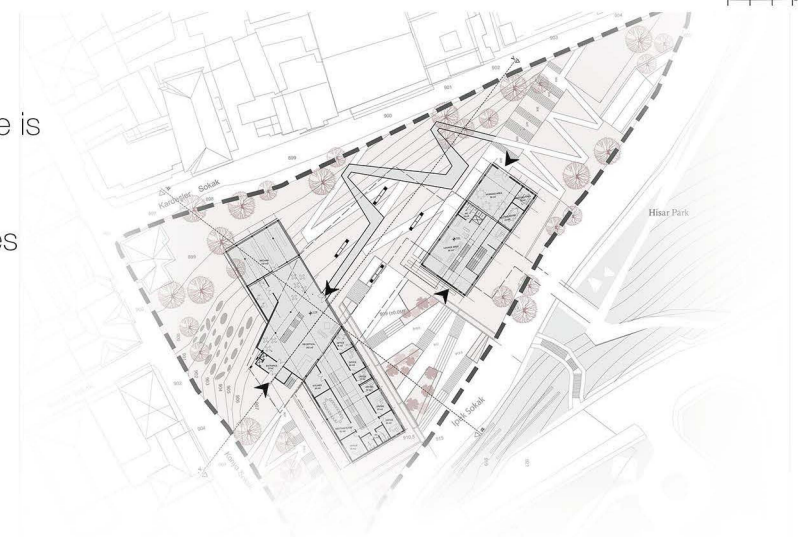
WALL TYPE: SPOLIA

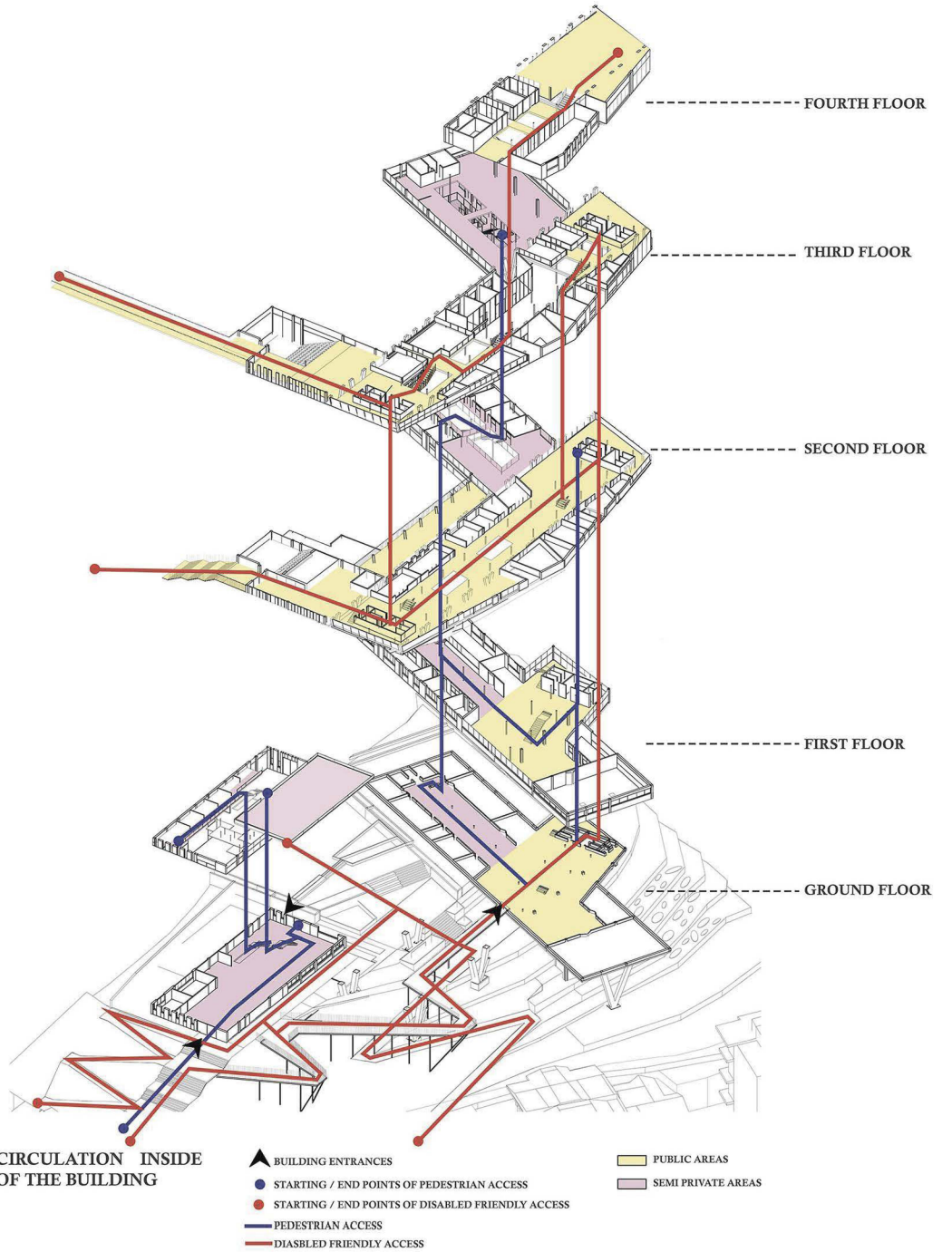
PROJECTS

Burcu Aydın | Section 1-5 | Yiğit Acar, Melis Sözen



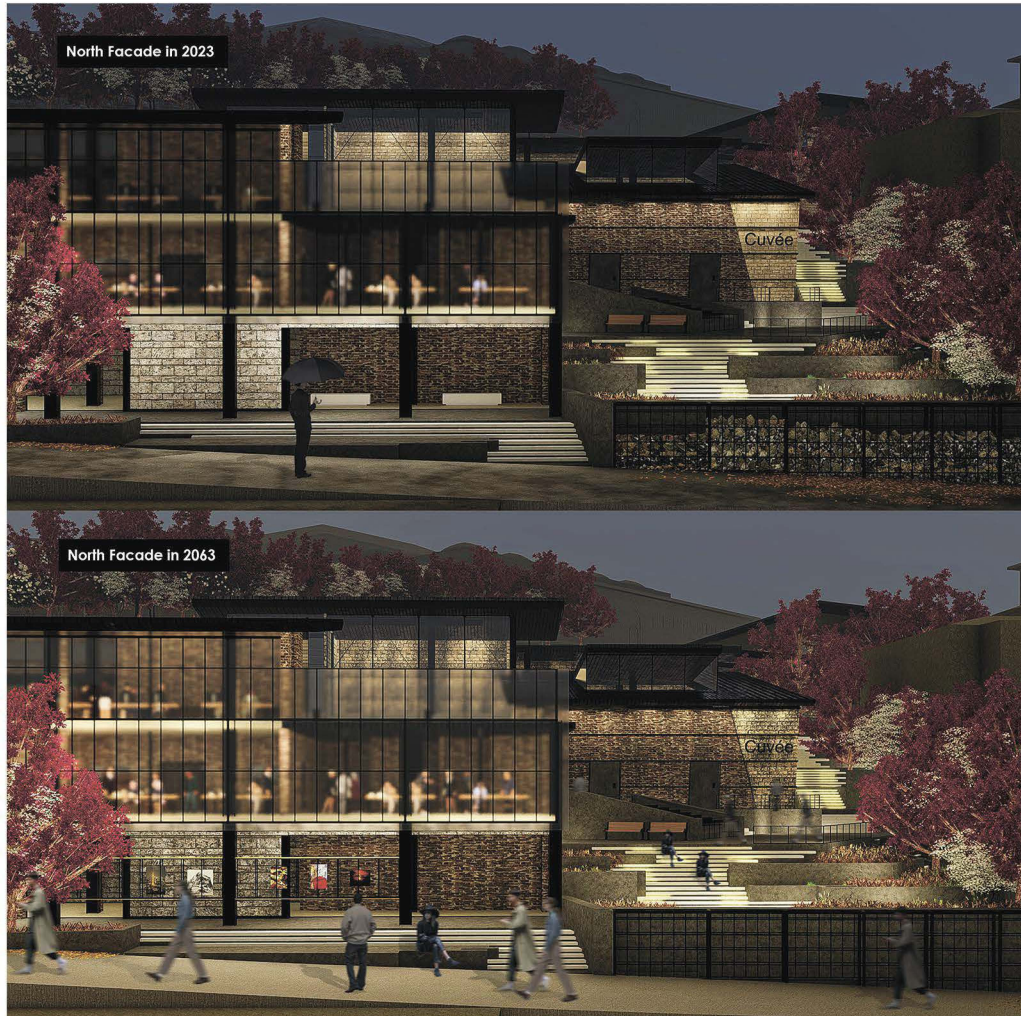
The site surrounding has clustered structure. On the other hand, on the south side of the site there is Hisar Park, relieving the surroundings. Therefore, it is aimed that the continuation of the park is provided. To achieve that, form is compacted and elevated. One of the main goals is creating a pleasant transition space between the streets, and the important structures. Surrounding structures are taken as reference on shaping of the buildings. It is aimed that the project provides multiple physical access and visual relationship with its surroundings. While providing various accesses, disabled friendly design has been taken as the main motivation.



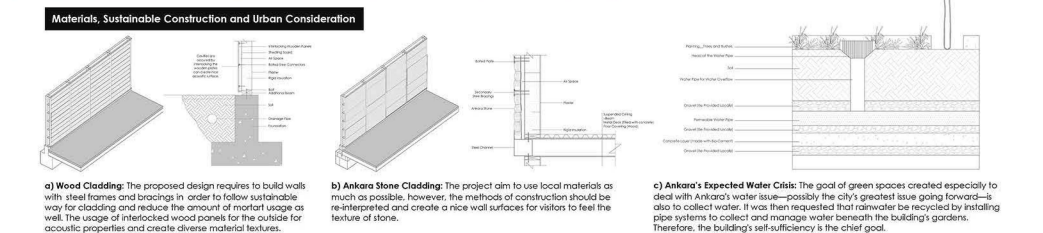
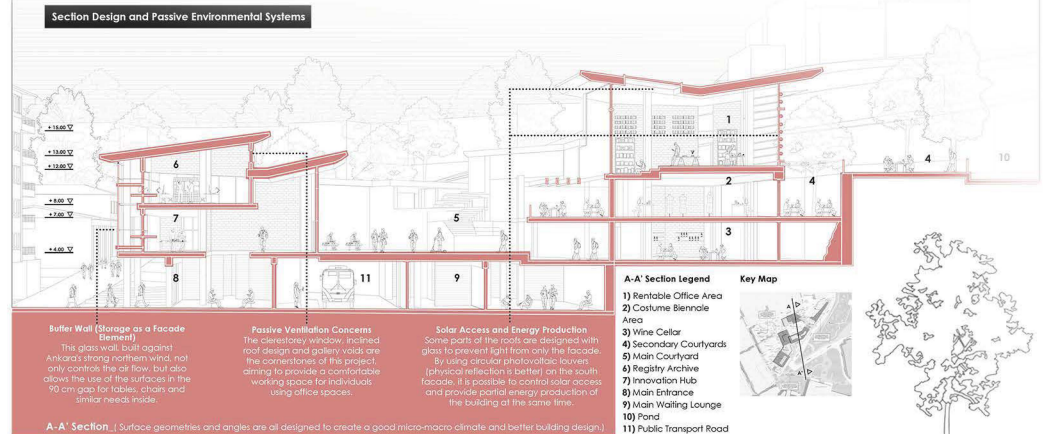
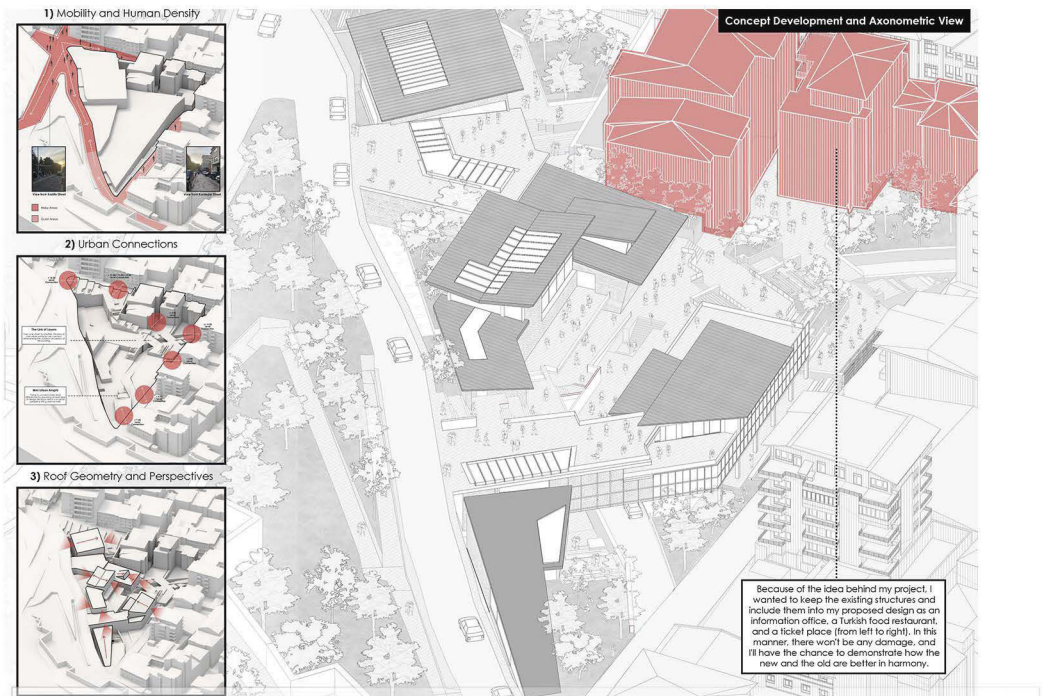


PROJECTS

La Cuvée | Can Yardımcı | Section 1-5 | Yiğit Acar, Melis Sözen



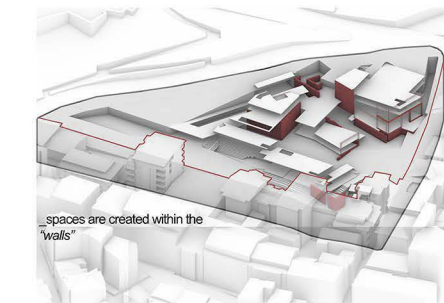
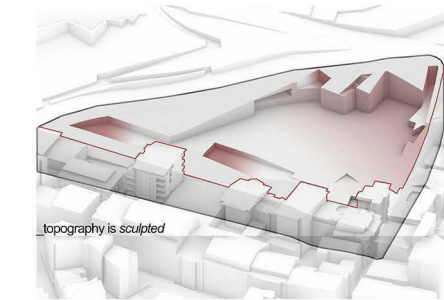
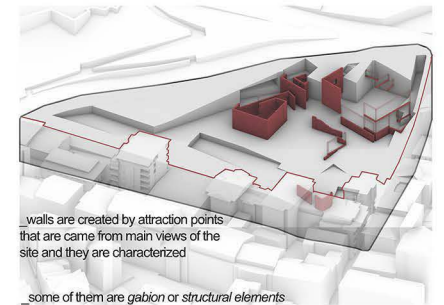
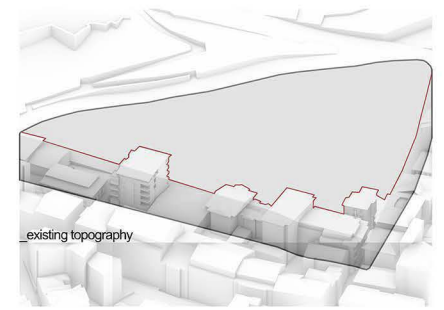
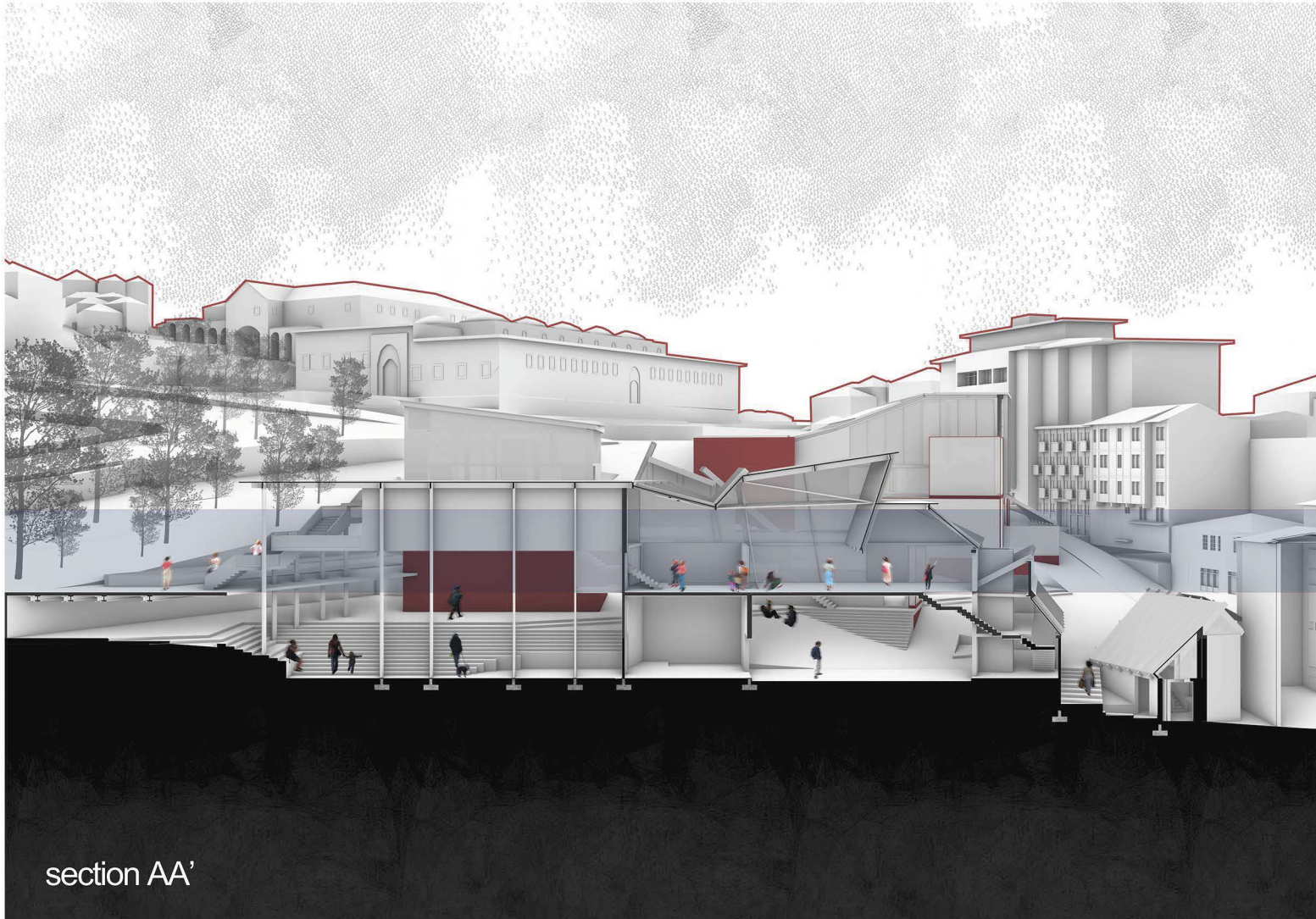
Ulus, being the historical center of the city, is like a collage. Traces of historical layers exist as vertical and horizontal strata. The study in Ulus is in such a location in this condition can be observed in all around the site. Using the curation of the components of this collage, the design seeks to critique and reinterpret the texture of Ulus and its surroundings. The curation I created to make my ideal project ageless and eternal isn't only about spatial fiction; it's also meant to be a place where people from various backgrounds and cultures can come to find a part of themselves.





PROJECTS

Chronotope | Elif Sude Özçelik | Section 1-5 | Yiğit Acar, Melis Sözen



The concept of “Chronotope” represents the creation of different spaces from the areas obtained through the intersection or between these walls, using “wall”, one of the most basic terminologies of architecture. These walls, like the walls in the pattern of Ulus within the scope of Heritage Ankara, tell about the time and its place. These walls are not used as a separation or division structure but as a framework for attitudes such as integration and continuity and gains a different character and contributes to the Heritage Ankara program.



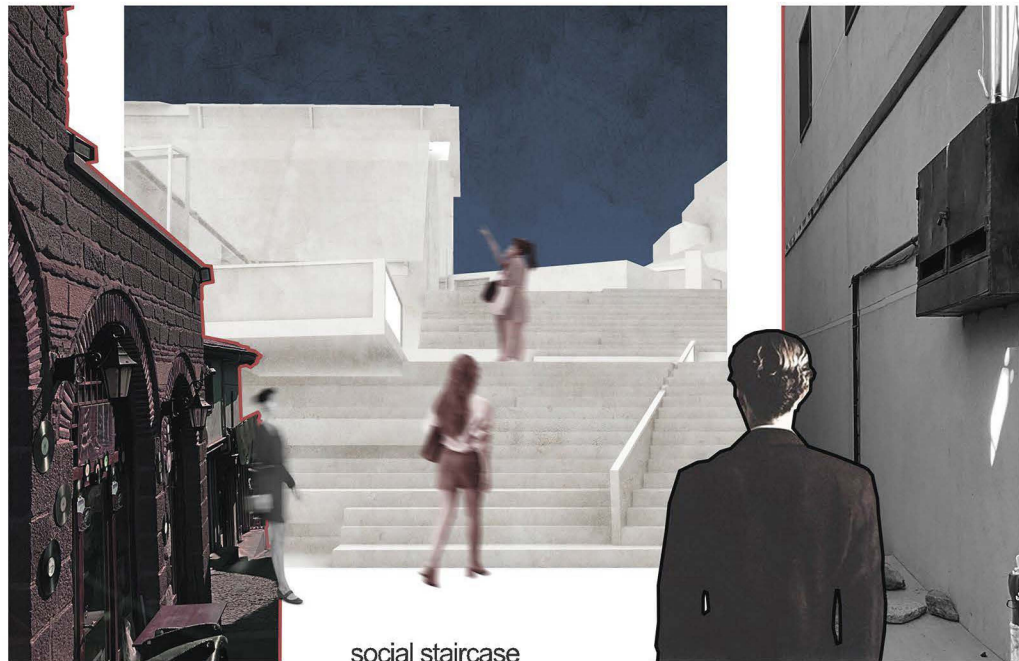
structural diagram



elevation view from konya street



elevation view from kardeşler street



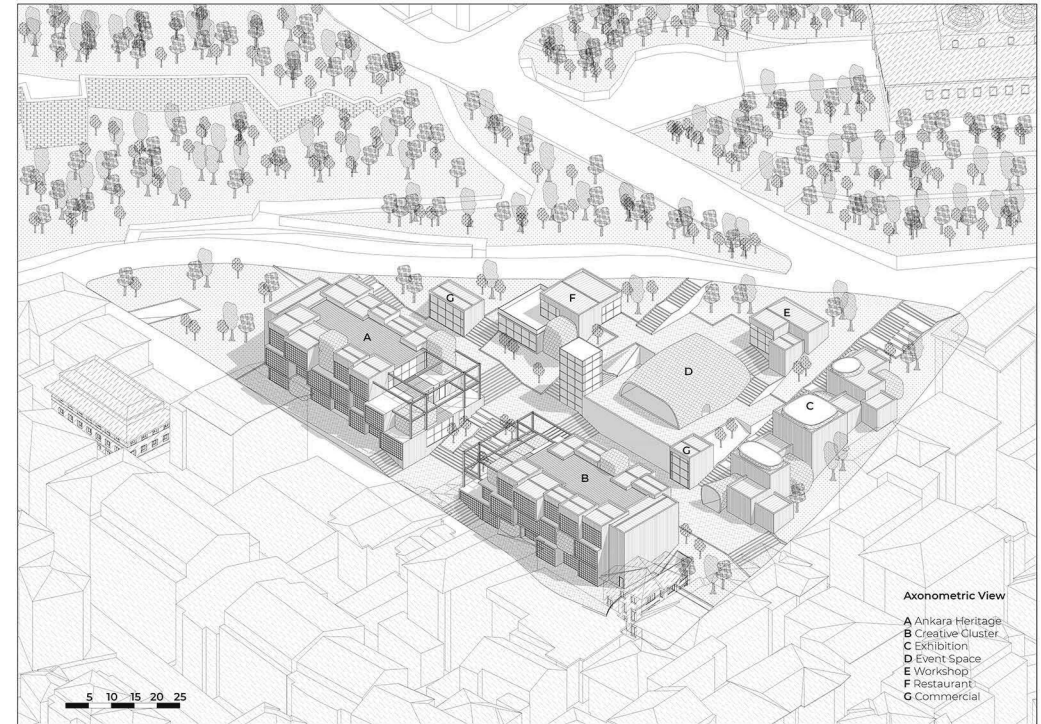
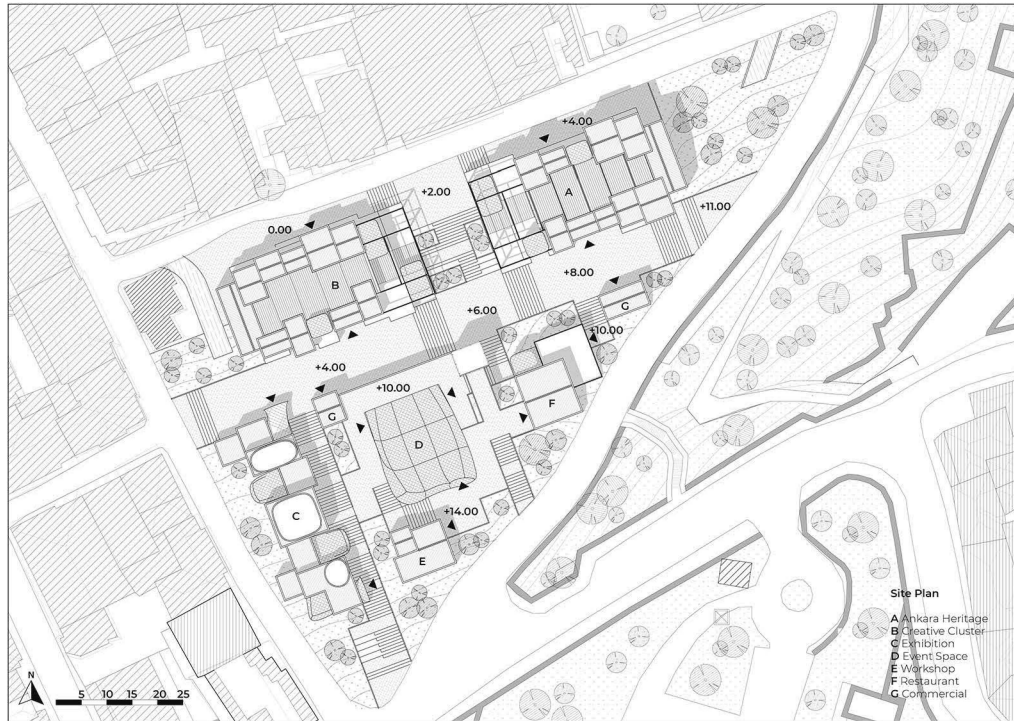
social staircase



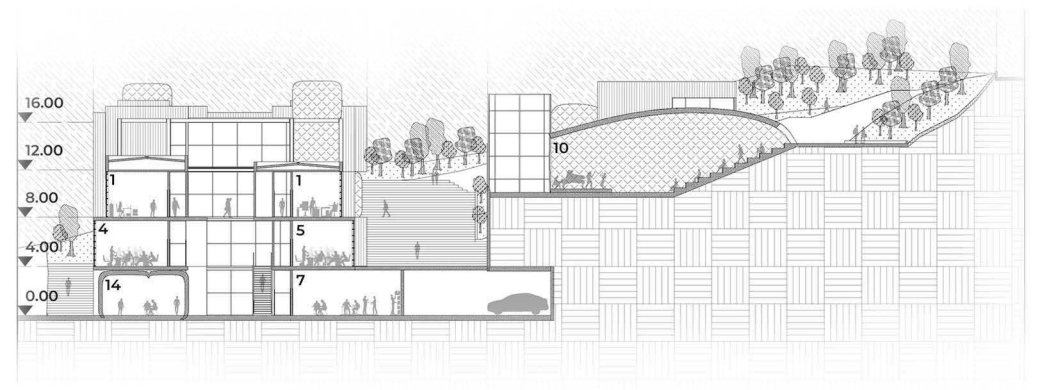
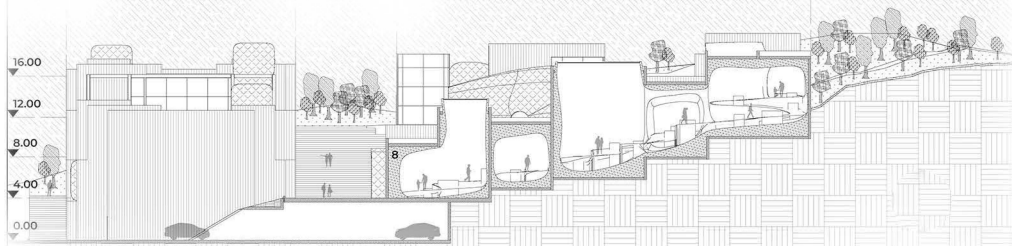
_event space

PROJECTS

The Modular Cityscape | Ömer Bahadır Torusdağ | Section 1-5 | Yiğit Acar, Melis Sözen



The Modular Cityscape continues the experience of its surroundings by respecting the scale and height of the buildings and elongating the existing paths. On the one hand, it follows the urban feeling; on the other hand, the inside of the project continues the park, creating a public space. The aisle following Konya Street divides the site, creating private and public areas. The project uses the rigidity of the management & study space and the flexibility of the common functions and creates corresponding languages for them. The modular structures resembling rectangular prisms can be moved to adjacent cities, presenting Ankara Heritage.





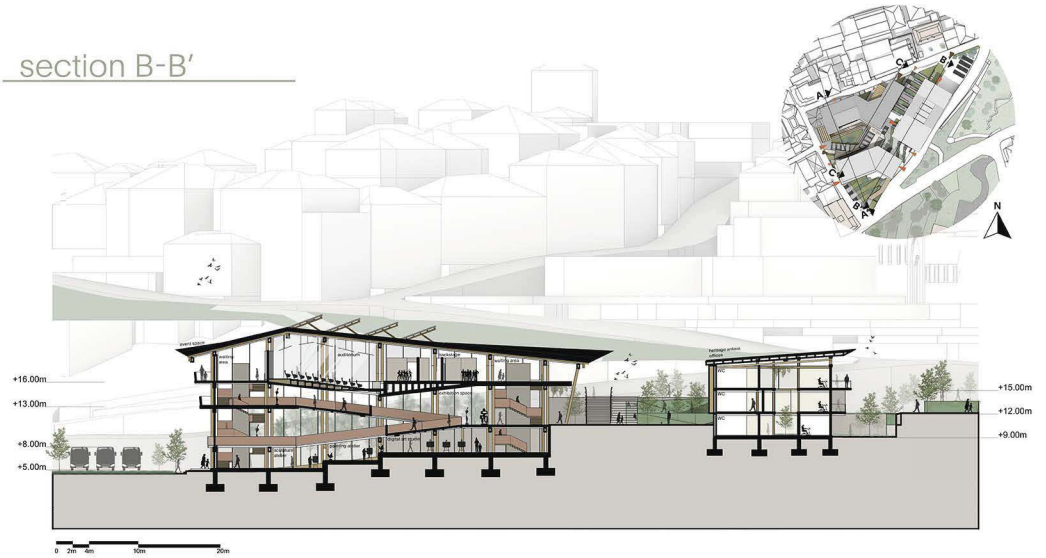
PROJECTS

Citadel Crossroads | Selina Aydođan | Section 1-5 | Yiđit Acar, Melis Sözen

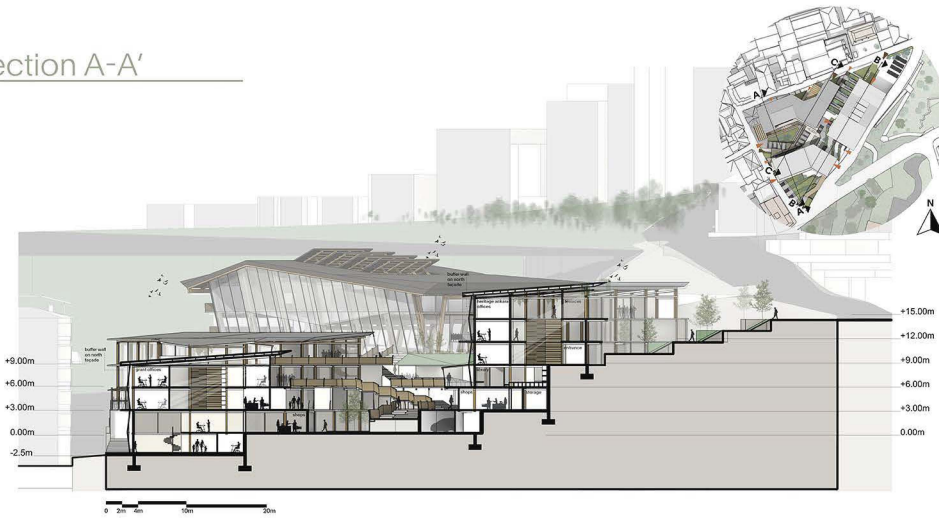
view from southwest



section B-B'



section A-A'



plan view at +6.00m



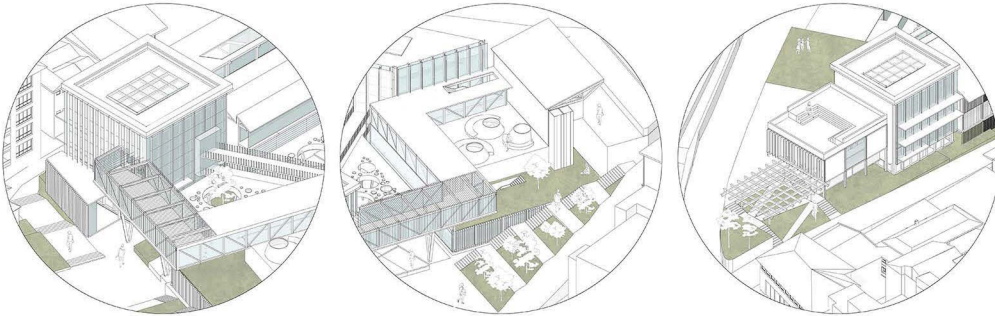
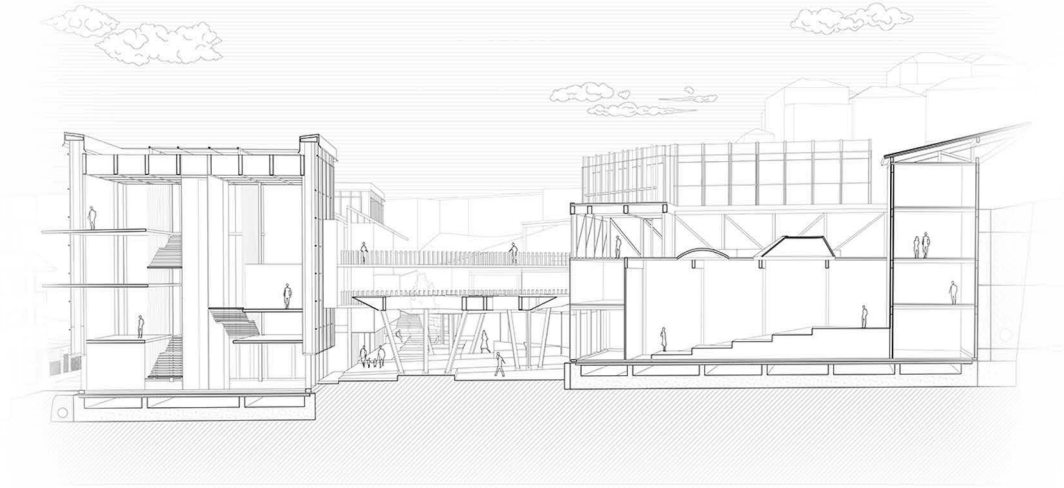
Citadel Crossroads, situated under the Ankara Citadel, acts as a vibrant space that connects the city's history with modernity. In this project, it was aimed to establish a cultural bridgepoint, revitalizing the underutilized area while creating connections amongst people. The space is aimed to be a dynamic hub for events, performances, & community gatherings, while also housing the offices for young professionals & Heritage Ankara staff; reviving Ankara's heritage & serving as a unifying force in the city.

axonometric view



PROJECTS

The Urban Block | Yasmin Khadj Khasan | Section 1-5 | Yiğit Acar, Melis Sözen



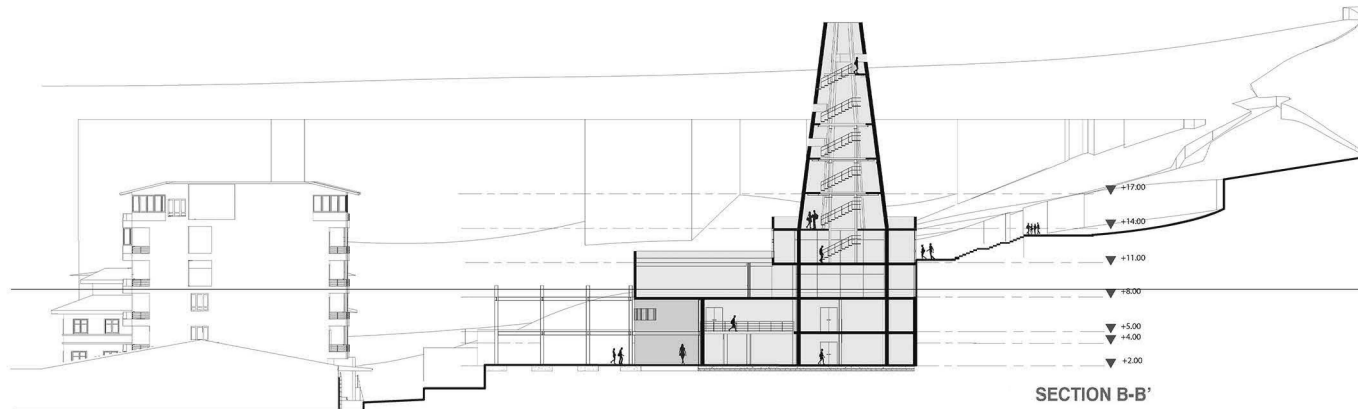
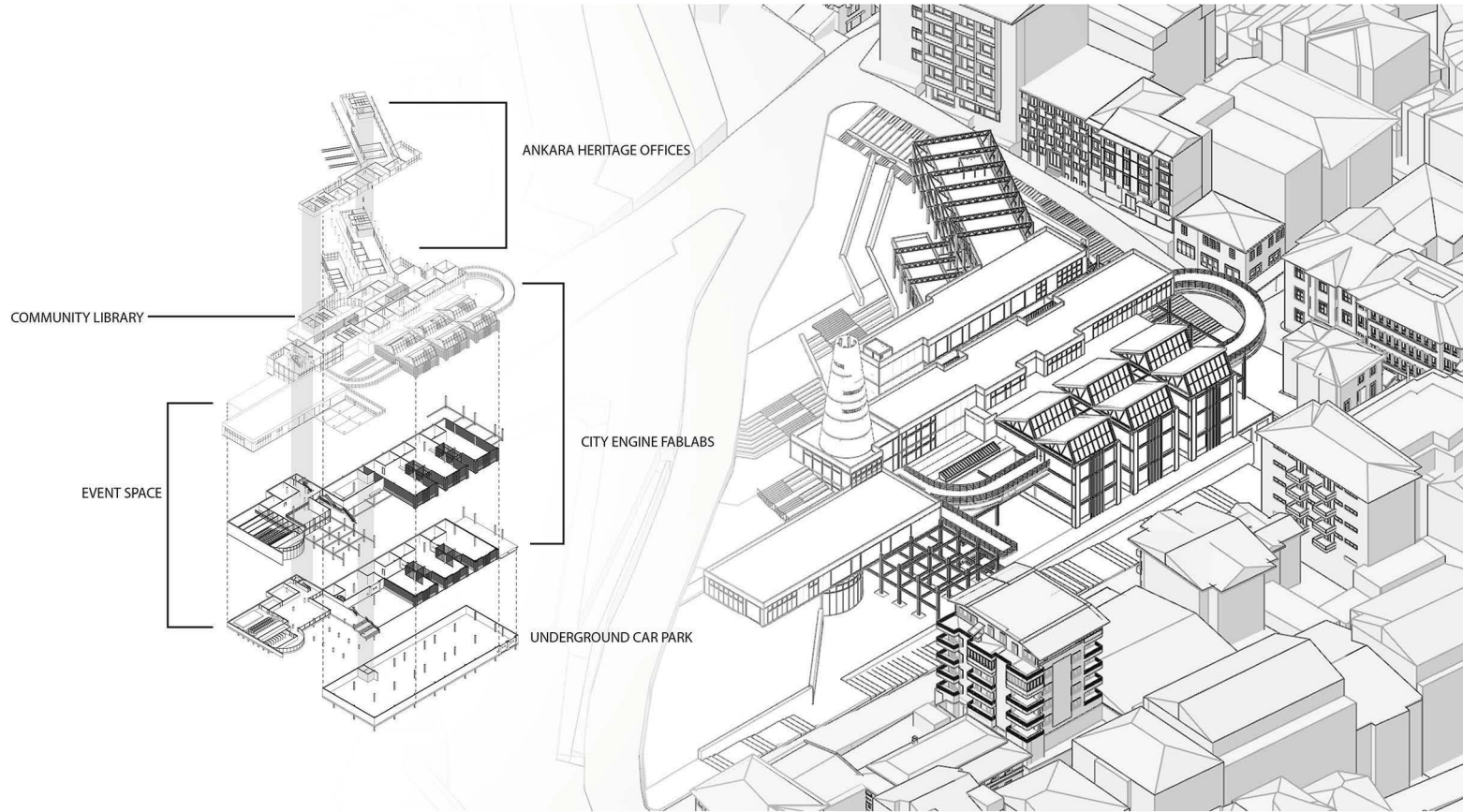
The Urban Block aims to be a humble human scale heritage center that emphasizes and enriches its surroundings. Since Ulus is very dense, there is a lack of open pleasant spaces. To solve that problem, a lively courtyard space that extends from Mersin street to Hisar Park was designed. This inviting space provides different experiences and is covered with perforated canopies. Inspired by the different building typologies in the surroundings, a mini city with different buildings connected via galleries was created. The center's urban connections ensure a dynamic relationship with the city, fostering community interaction.



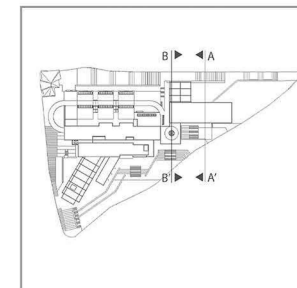


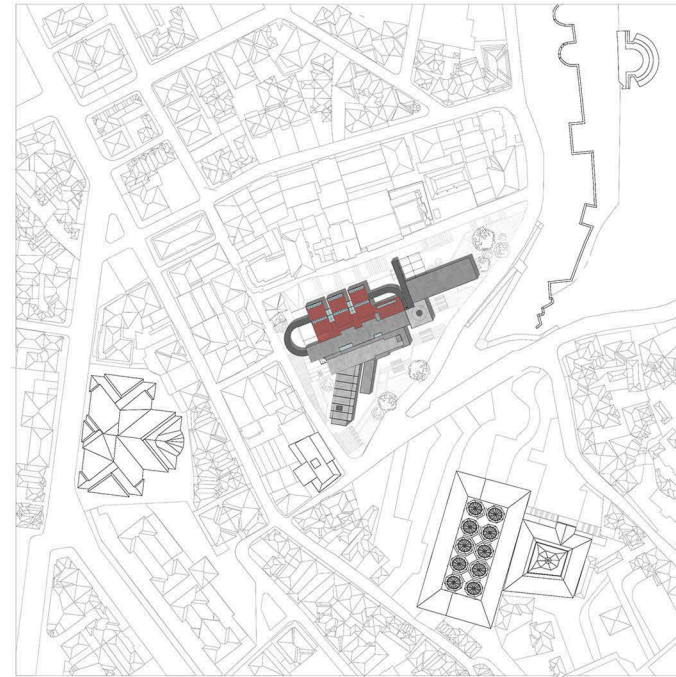
PROJECTS

City Engine | Eda Kızıldağ | Section 2 | Meral Özdegiz Başak



City Engine is a local architectural drive for a positive change in Ankara. Architectural offices focus on identifying and redesigning areas requiring restoration, while Fablabs assess pollution in non-renovatable spaces. Material and design labs within Fablab blocks play a crucial role in determining the city's materials, their allocation, and evaluation. The additional block, which comprises exhibition halls, stages, classrooms, and open spaces, seamlessly extends Hisar Park, serving as vibrant platforms to showcase City Engine's work and raise public awareness. The structure actively engages in recycling, purification efforts, contributing significantly to Ankara's cultural and societal development. City Engine is a step for transformation, shaping a more sustainable and culturally enriched Ankara.





SITE PLAN

COLLECTING WASTE, RESOURCE



SORTING



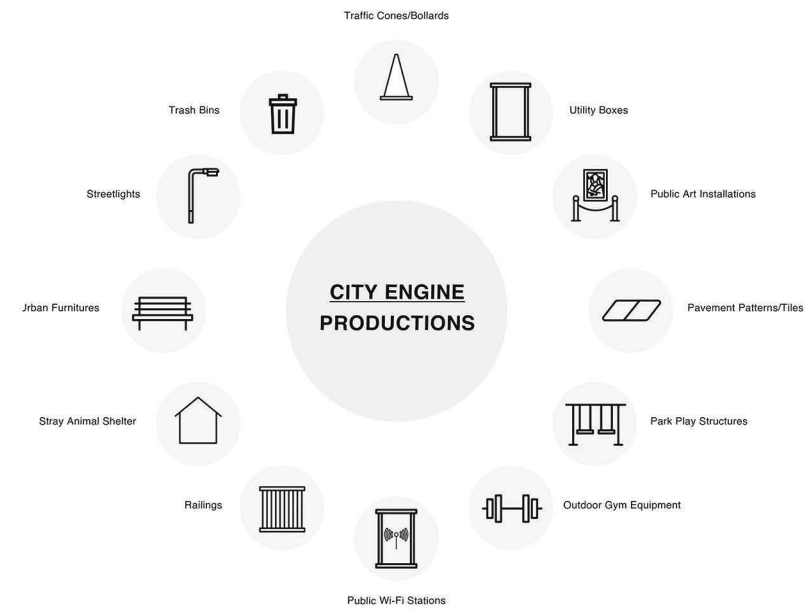
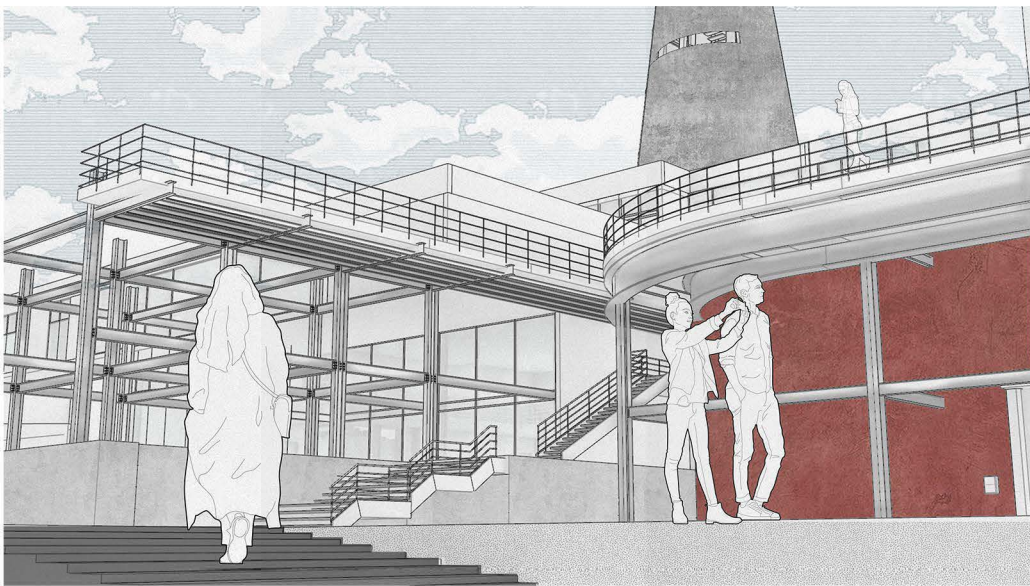
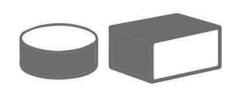
SHREDDING



DENSIFYING / MIXING / MELTING

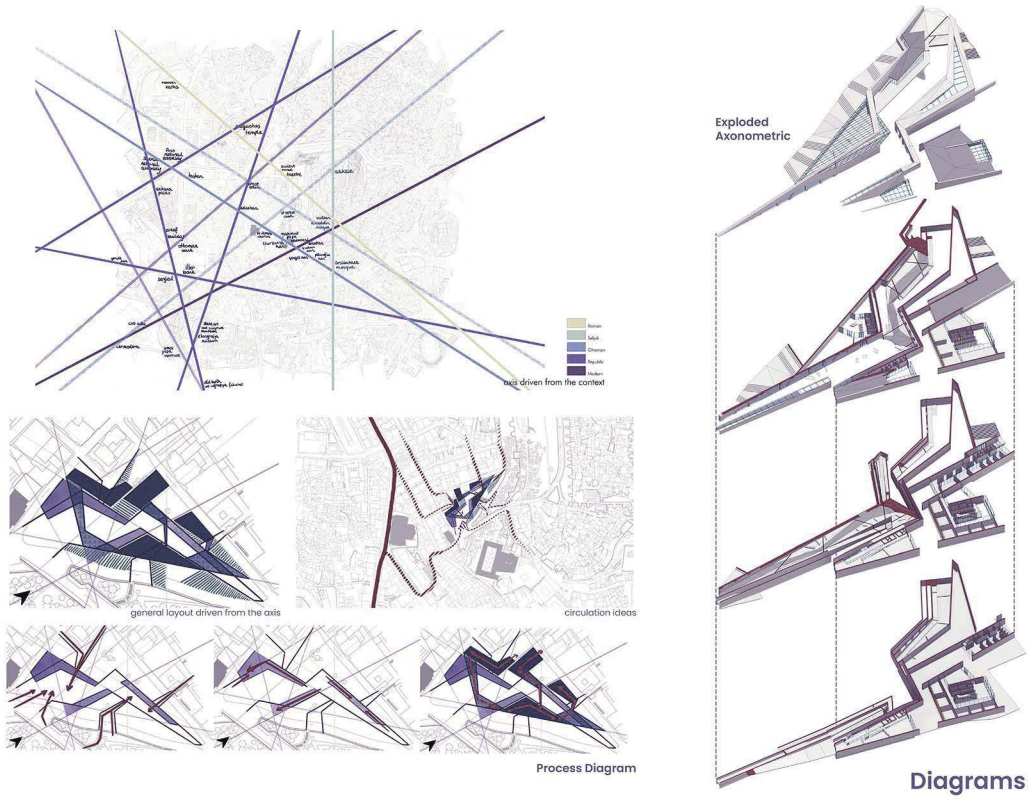


MOLDING

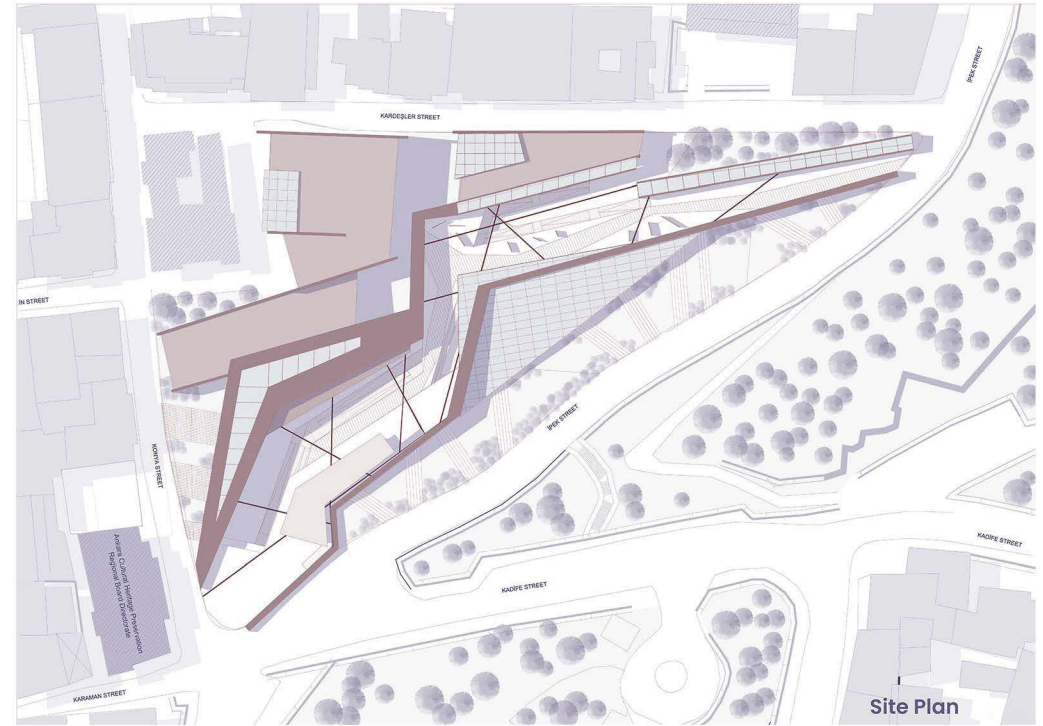


PROJECTS

Concurrence | Işıl Aygün | Section 2 | Meral Özdegiz Başak

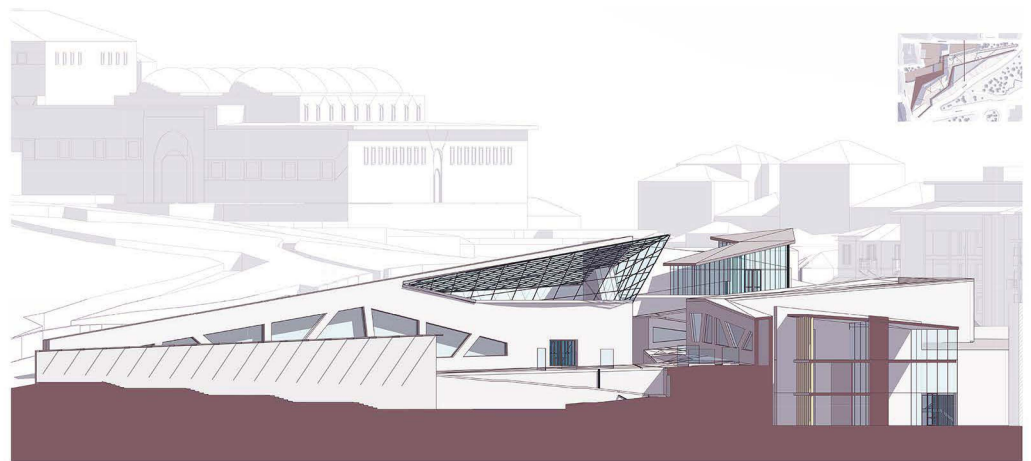


Diagrams

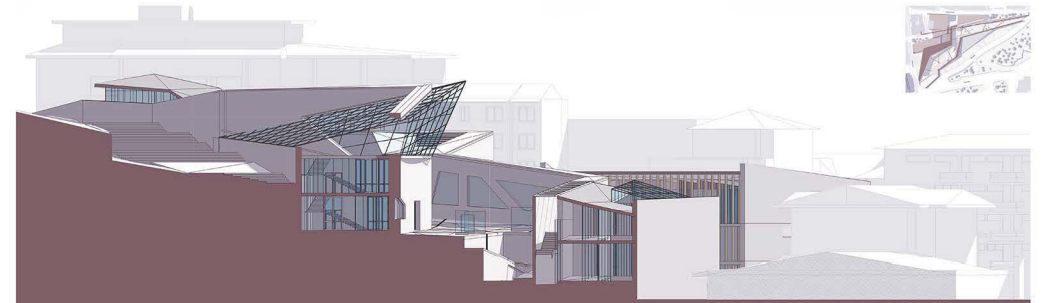


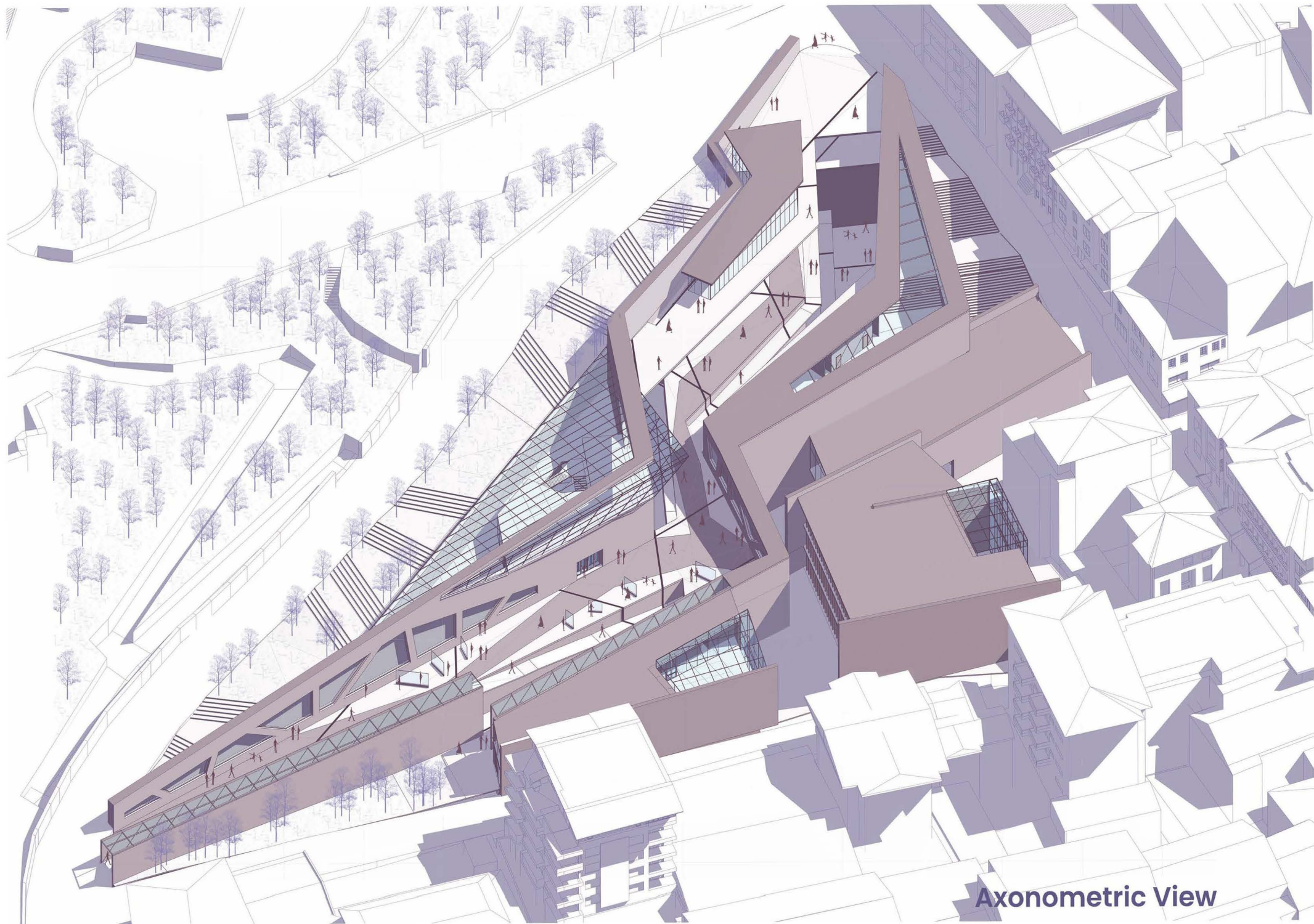
Site Plan

The layered texture of Ankara, where each one of the layers tells a different story, was the project's starting point. Concurrence aims to take inspiration from this rich cultural memory and present it while adding another layer. The project takes its form from the axis system created by connecting different landmarks from different periods in the city. The split connects the site's ends and becomes the project's center. While the layers formed within the split highlight the layered texture of the city, the split acts as an open archive & exhibition for people to experience the heritage of Ankara.



Sections





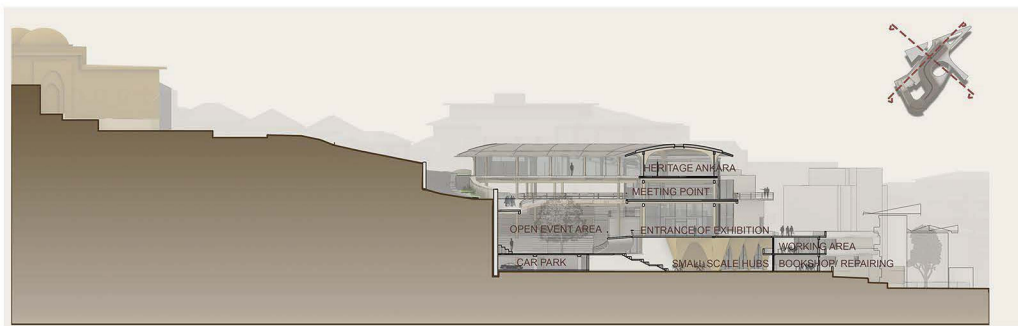
Axonometric View

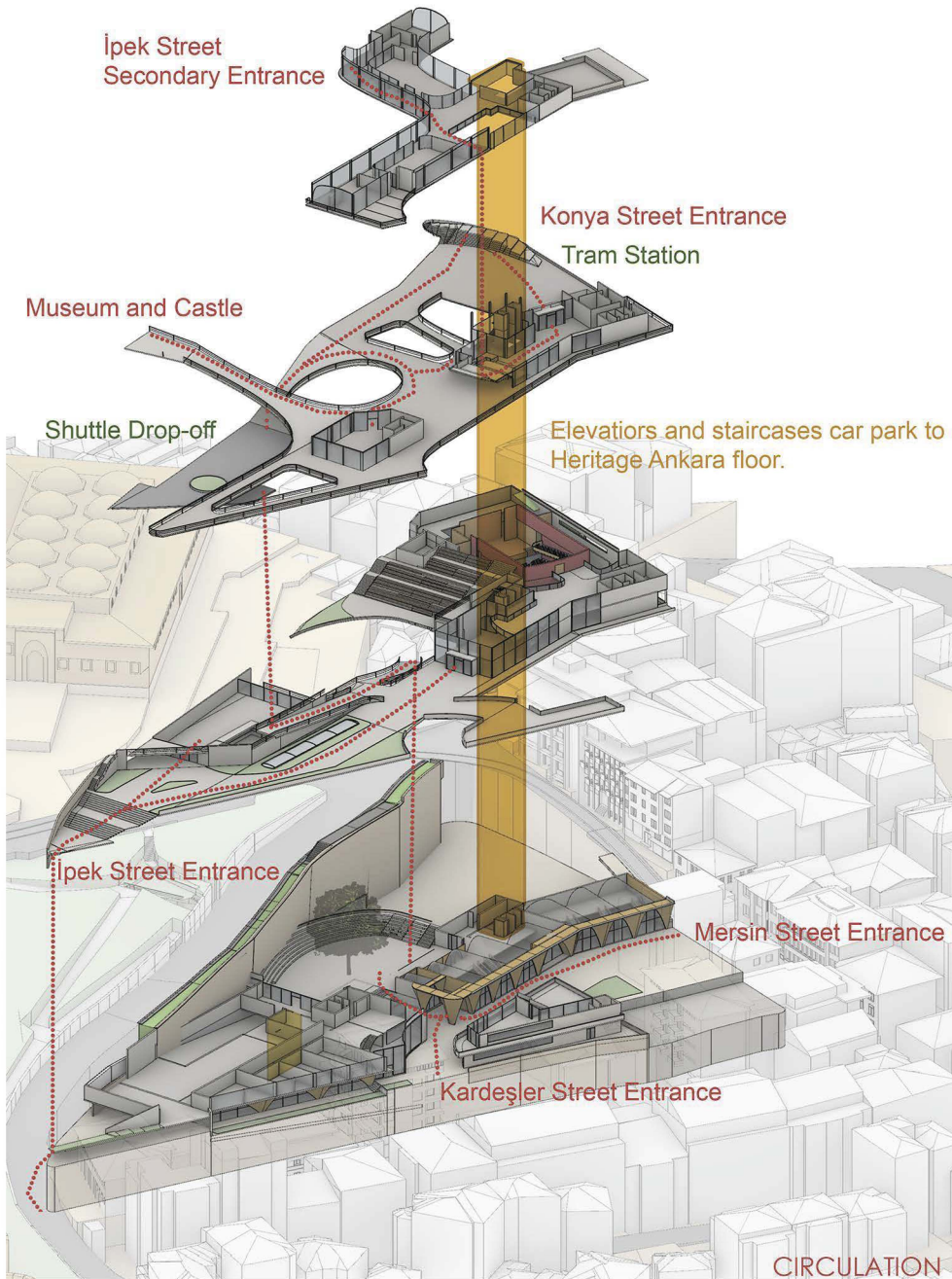
PROJECTS

EduCraft Campus | Mustafa Alperen Yaşa | Section 2 | Meral Özdegiz Başak

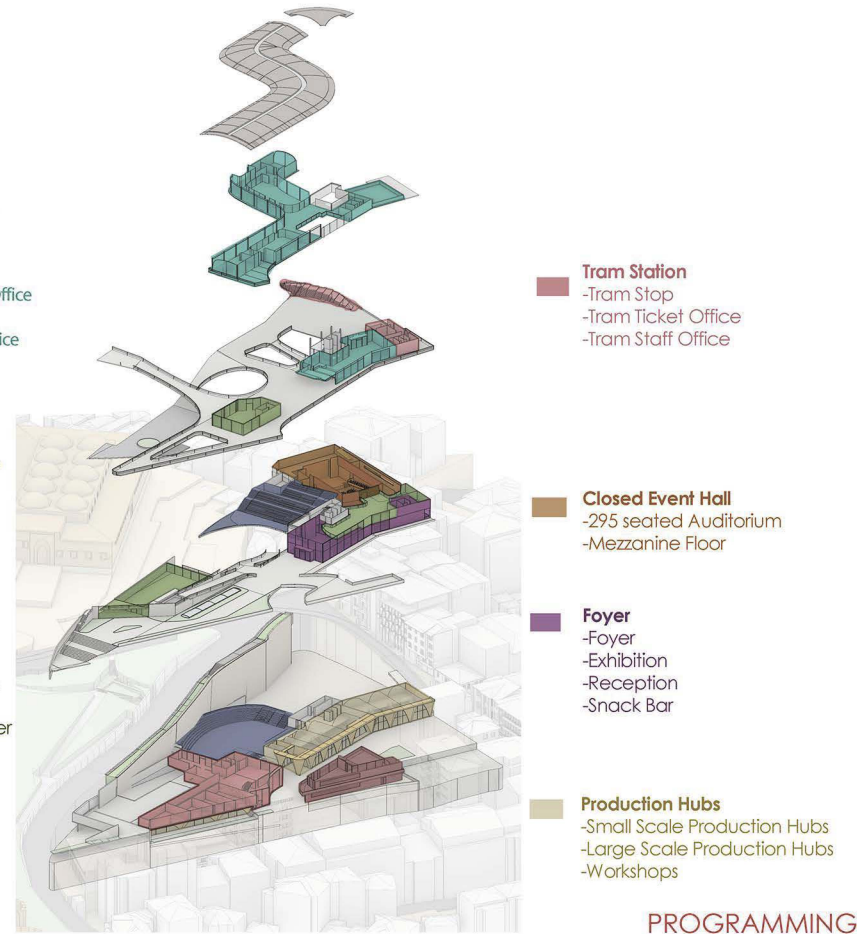


EduCraft Campus is a dynamic learning center that seamlessly integrates education, culture, and craftsmanship. Distinguished by its modern architecture, rich historical elements, and educational opportunities, the campus stands out as a beacon of innovation. Designed with utmost respect for Ankara's history and bazaar culture, the campus offers an unforgettable welcome experience for museum and castle visitors. The innovative funicular line provides easy access for students and tourists alike, enhancing the overall learning experience. ECC brings together education, culture, and craftsmanship, enriching the learning journey. It unites future leaders and culture enthusiasts, inviting everyone to embark on an educational adventure.





- Heritage Ankara**
 - Library
 - Meeting Rooms
 - Archive
 - Documentaton Office
 - Studio
 - Management Office
 - Offices
 - Resting Area
 - Study Area
- Open Event Area**
 - Open Event Hall
 - Open Exhibition Area
- Cafes**
 - Cafe
 - Cafe/ Bistro
 - Edible Activities Area in Auditoriums Foyer
- Academi**
 - Clasrooms
 - Workshops
 - Working areas
 - Bookshop
 - Book Recovery



-Glued laminated timber (GLULAM)
 -This structure system was used for platforms and bridges as a lightweight structure.
 -Because of its logic arc shapes was used in this design



PROJECTS

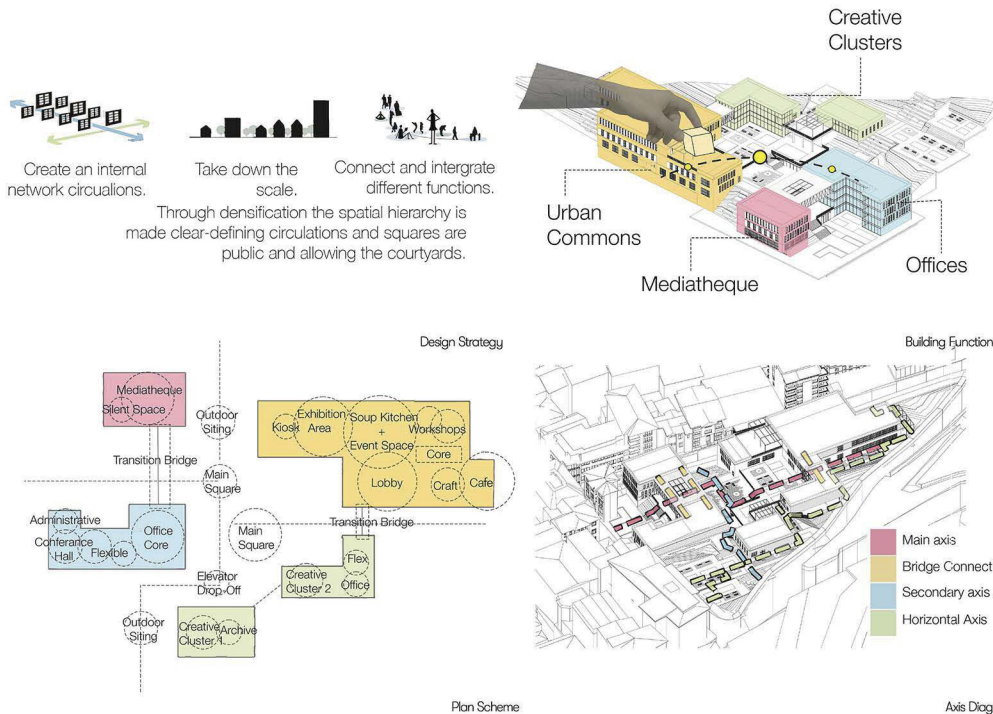
Terrainature | Asrın Ongun Gülmen | Section 3-4 | Ezgi İşbilen, Zeynep Ege Odabaşı



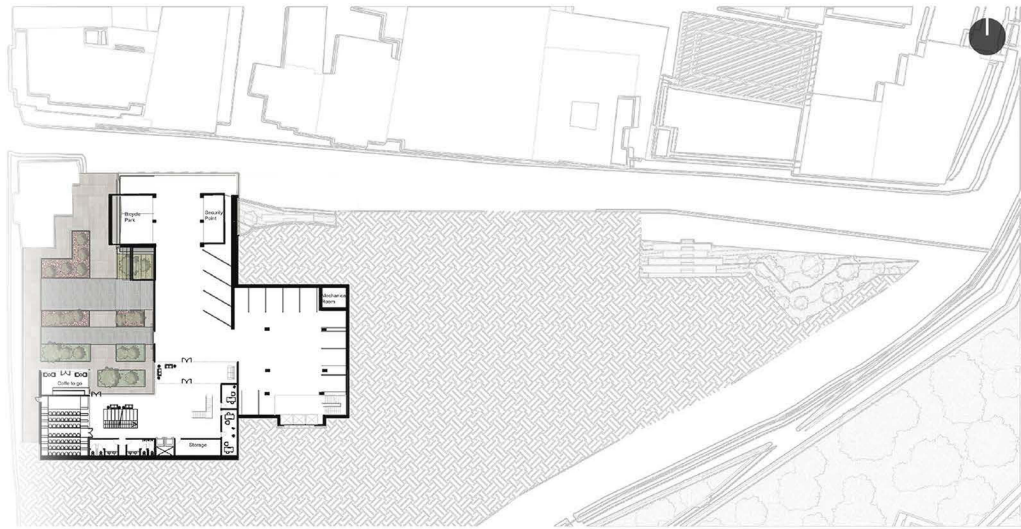
View from courtyard



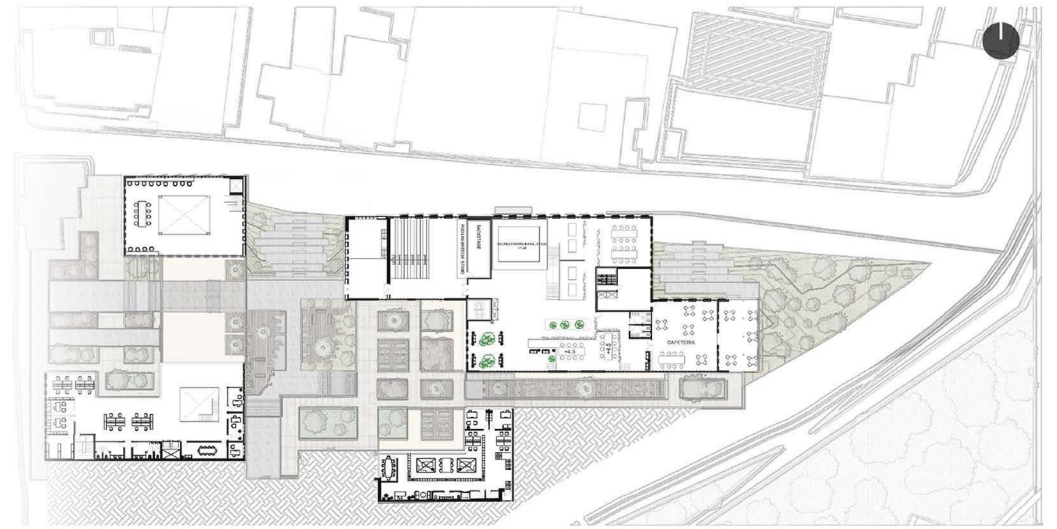
Axonometric View



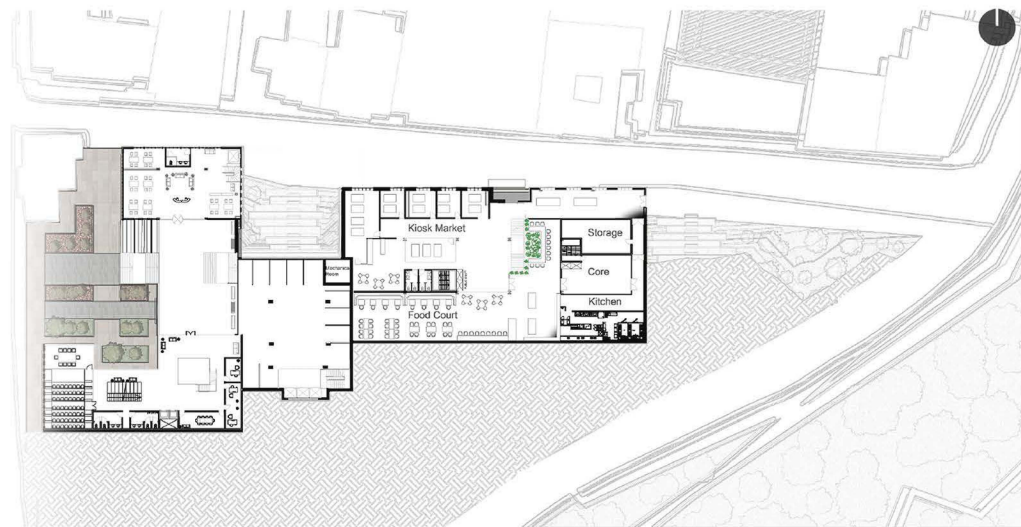
Terrainature unfolds with a conscientious integration, embracing a modest architectural scale in harmony with its components. Anchored in contextual humility, the design follows natural slopes, avoiding alterations. The mediateque serves as a dynamic knowledge hub, complemented by offices, creative clusters, and public services. Departing from conventional landscaping, the project celebrates natural textures, using native vegetation to enhance ecological resilience. A well-crafted circulation network addresses site access, ensuring connectivity and functionality. By minimizing environmental impact, fostering community engagement, promoting sustainable design, and prioritizing circulation, Terrainature exemplifies a thoughtful and integrated architectural approach, enriching the built environment while preserving the intrinsic beauty of the landscape.



Plan View at 0.00
1/500 Scale



Plan View at +6.00
1/500 Scale



Plan View at +3.00
1/500 Scale



Plan View at +9.00
1/500 Scale

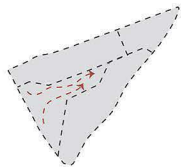
PROJECTS

Heritage Ankara | Elifsu Yumurtacı | Section 3-4 | Ezgi İşbilen, Zeynep Ege Odabaşı

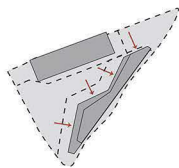
Creating a "Threshold" Between Centers



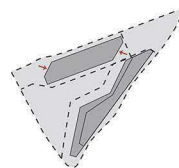
- | | | |
|----------------------------------|------------------------------------|-----------------|
| 1 Anatolian Civilizations Museum | 7 Ulus Square and Atatürk Monument | Center of Ulus |
| 2 Erimtan Museum | 8 İş Bankası Museum | Cultural Center |
| 3 Rahmi Koç Museum | 9 First TBMM Building | Focused Site |
| 4 Clock Tower and Castle Gate | 10 Central Bank Building | |
| 5 St. Teresa Catholic Church | 11 Ziraat Bank Building | |
| 6 Hisar Park | 12 PTT Building | |



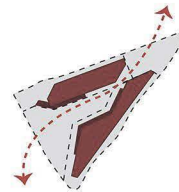
Inner Courtyard



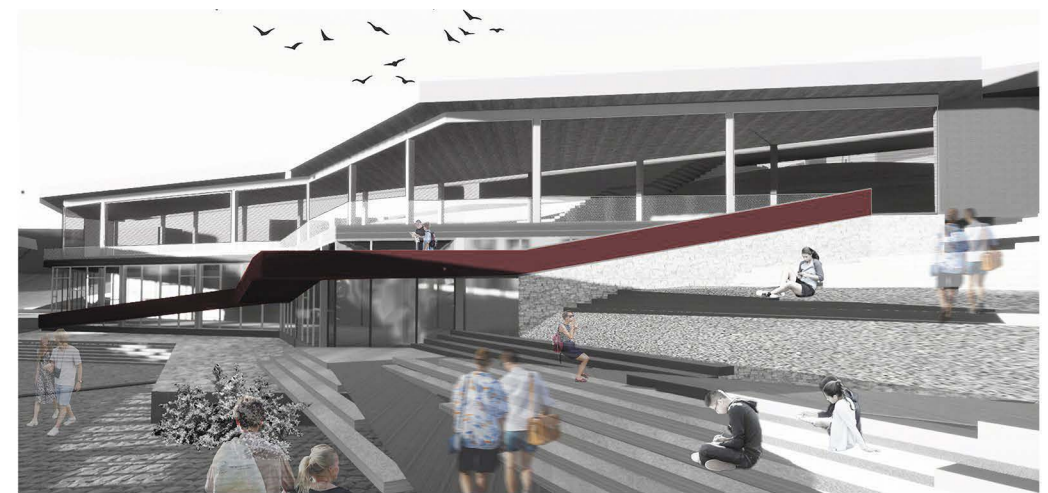
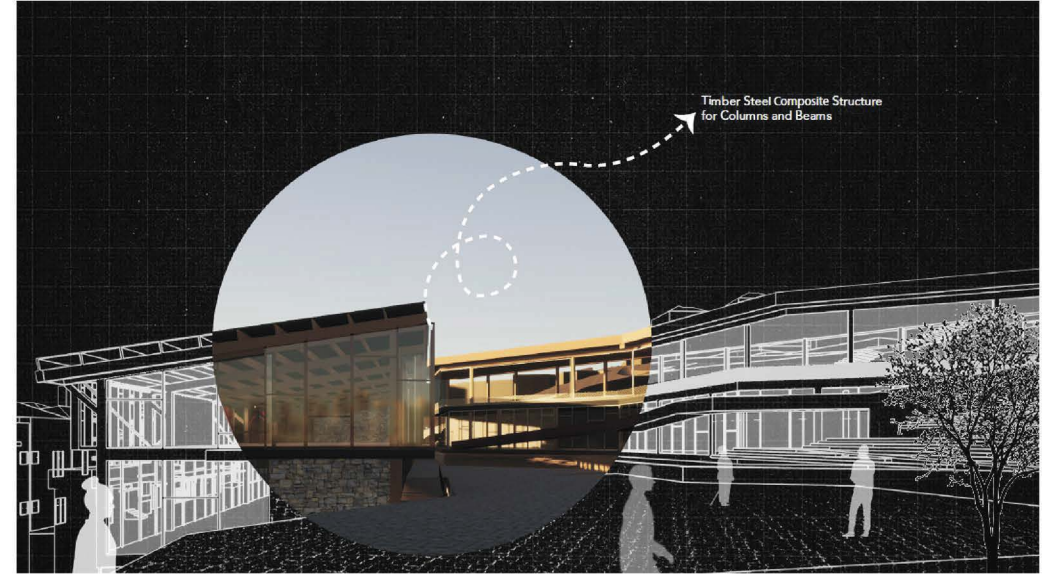
Dynamic Form Configuration



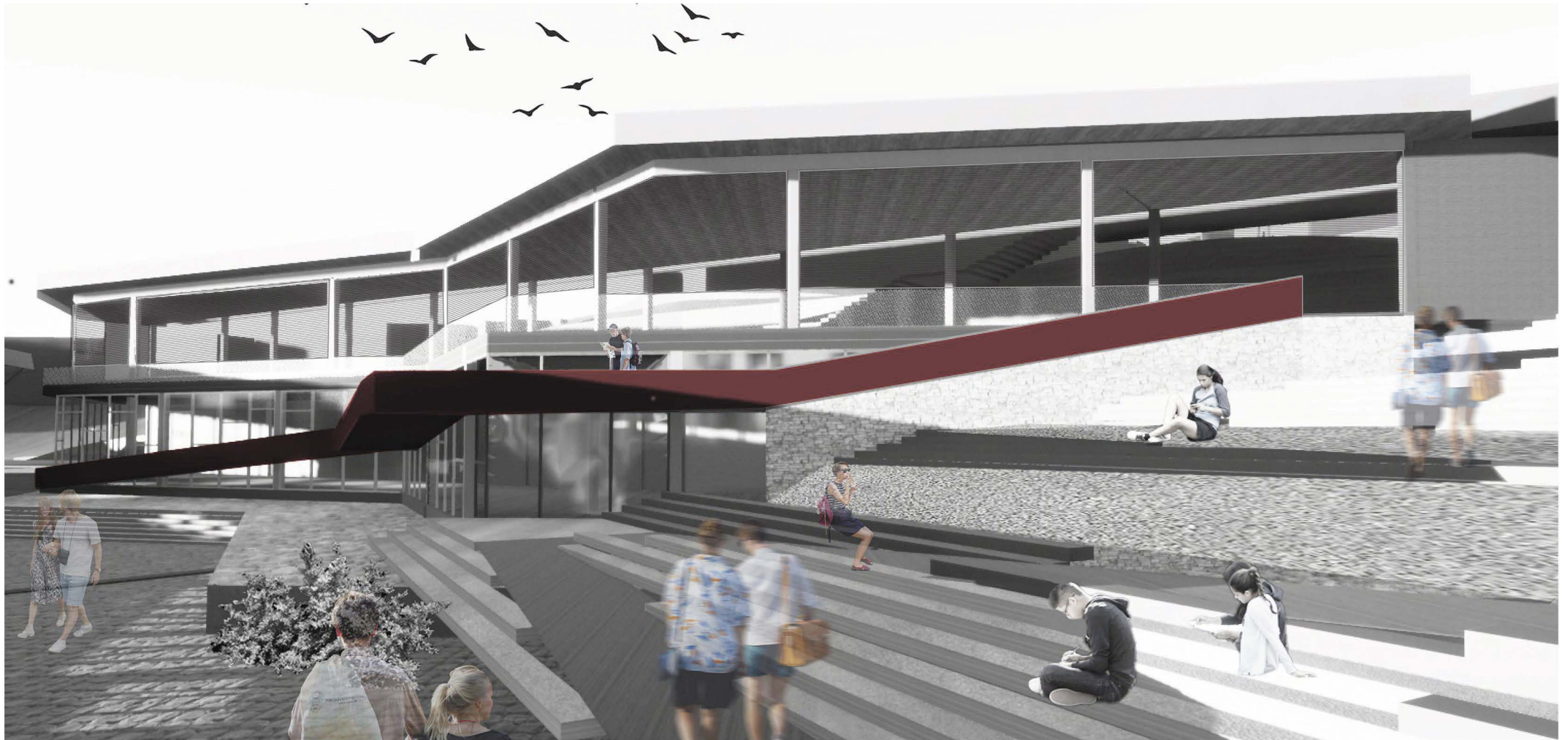
Form Interventions for Circulation Development



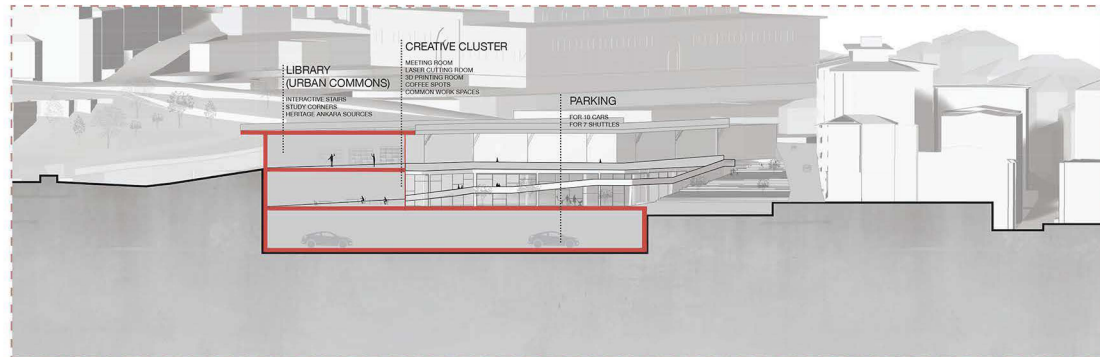
"Threshold"



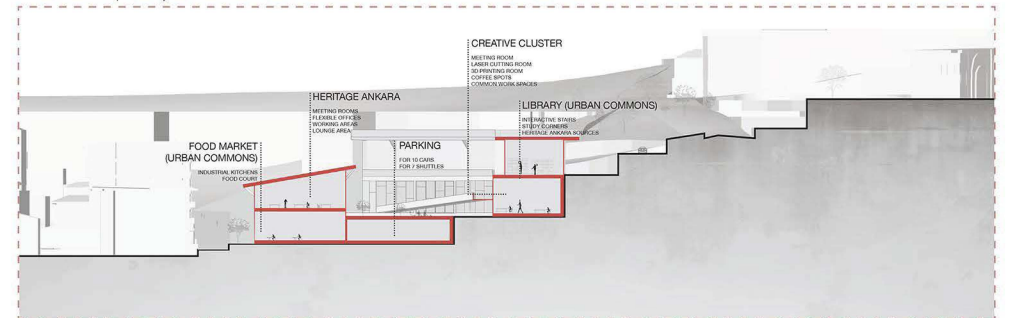
The project site is located in the Ulus District of Ankara/Turkey. Moreover, it is situated right between the cultural centre and the city centre of Ulus. Hence, the design aims to provide a threshold between these two centres while consisting of certain functions such as urban commons, creative clusters and Heritage Ankara offices. In addition to these functions, vitalizing the area and providing the mentioned "threshold" idea are aimed. With the dynamic forms of the program masses, its dynamic circulation and landscape usage, the idea of a transitional area to the district is achieved.



Section AA' (1/300)

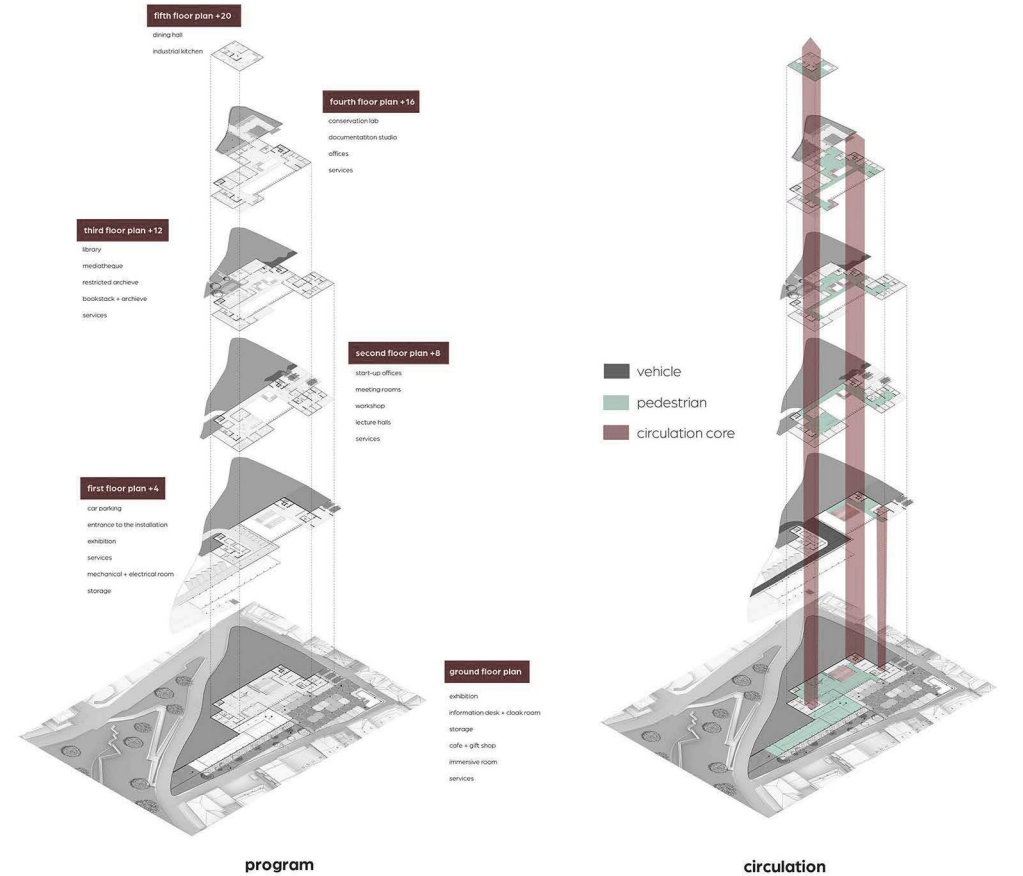


Section BB' (1/300)



PROJECTS

Mourning of Amnesia | Nisan Özdamar | Section 3-4 | Ezgi İşbilen, Zeynep Ege



Heritage Ankara accommodates public and restricted functions together in a compact form of design. The project contains an exhibition and installation about the works and studies in the institute, which is called "Mourning of Amnesia". The name is chosen to reflect the lost of Ankara in terms of heritage from various periods. In commemorating the vanishing cultural legacy of Ankara, the exhibition and installation aim to encapsulate the intricate layers of the city's history, both past and present, through a modular installation designed to captivate visitors and prompt a sense of collective mourning by experiencing.



MOURNING OF AMNESIA

*dedicated to
the lost
heritage of
ankara*

PROJECTS

CUCA | Tolunay Demir | Section 3-4 | Ezgi İşbilen, Zeynep Ege Odabaşı



Entrance to CUCA



Entrance to CUCA



Aerial View of CUCA

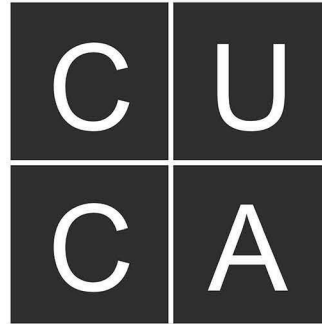


Courtyard View

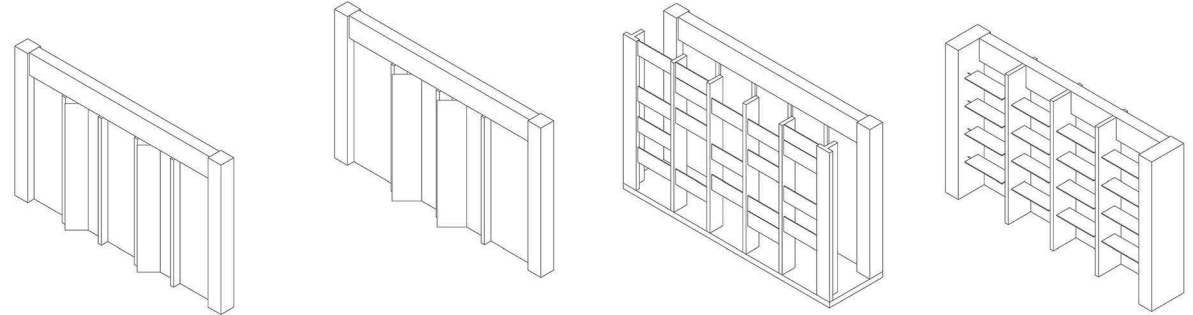
CUCA enter Heritage Ankara —an innovative program augmenting Ankara's restoration endeavors. In urban landscapes, history weaves a complex tapestry of decay, renewal, and layered stories. Ankara's Kale (Citadel) District embodies this narrative, a living testament to centuries of evolution and rejuvenation. This initiative addresses the intricate web of stakeholders and complexities inherent in preservation projects. Heritage Ankara fosters dialogue, manages knowledge dissemination, and meticulously documents the restoration journey. More than just conserving historical landscapes, it's a beacon of community engagement, amplifying Ankara's commitment to its heritage. By nurturing strong community relations, Heritage Ankara seeks to redefine the rehabilitation narrative, ensuring a vibrant, sustainable future for Ankara's historical core.



Section Perspective View



HOW TO



I

II

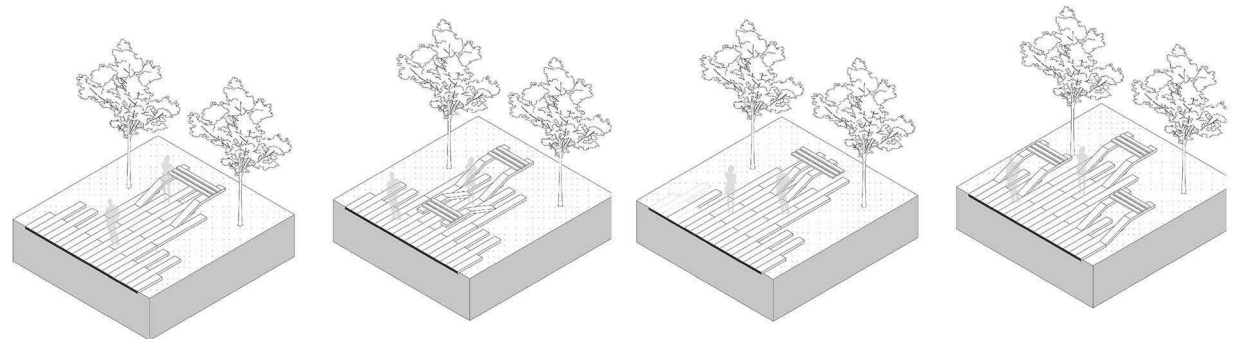
III

IV

FACADE CATALOG



WHAT IF



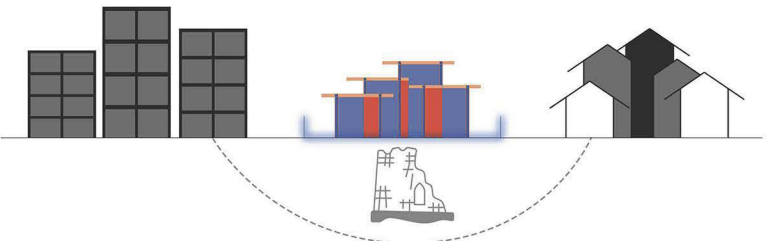
I

II

III

IV

URBAN FURNITURE CATALOG



EXPERIMENT

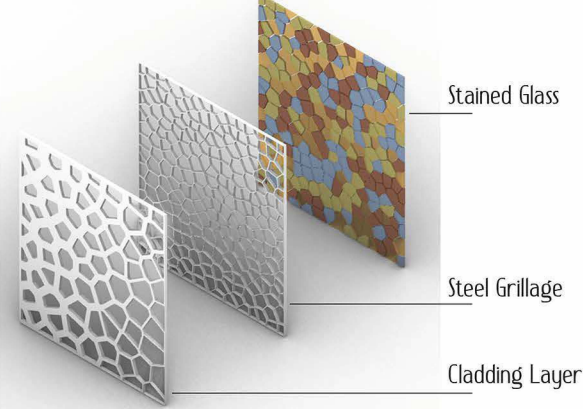
PROJECTS

HAN | Zeynep Sude Ayalan | Section 3-4 | Ezgi İşbilen, Zeynep Ege Odabaşı

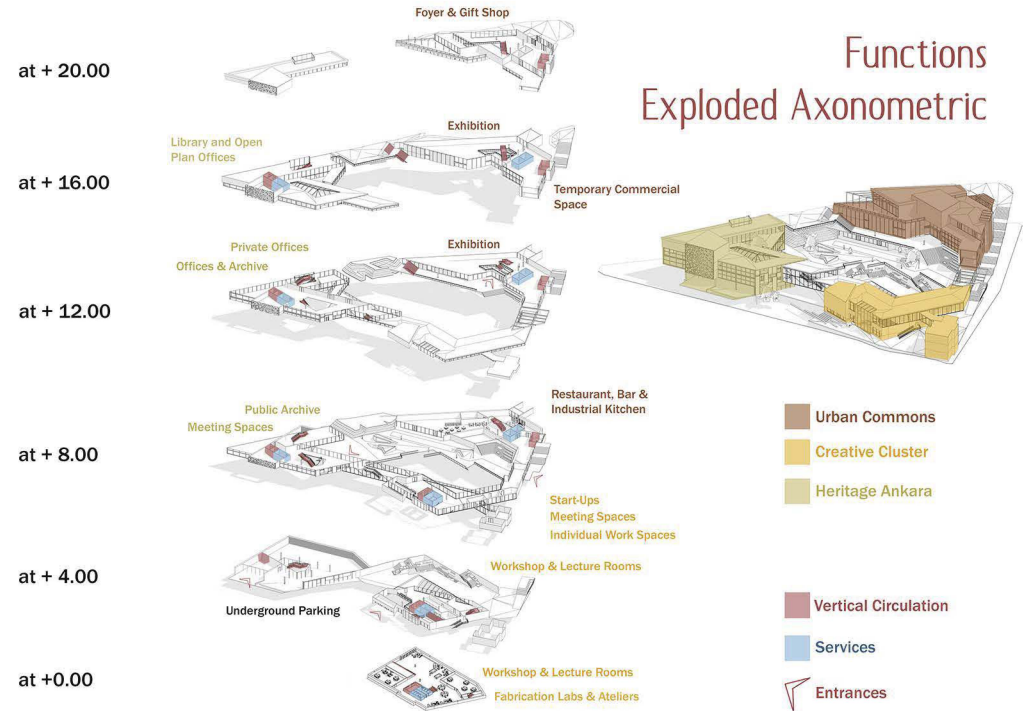
The interior of the Tereza Church



Structural Layers of Stained Glass



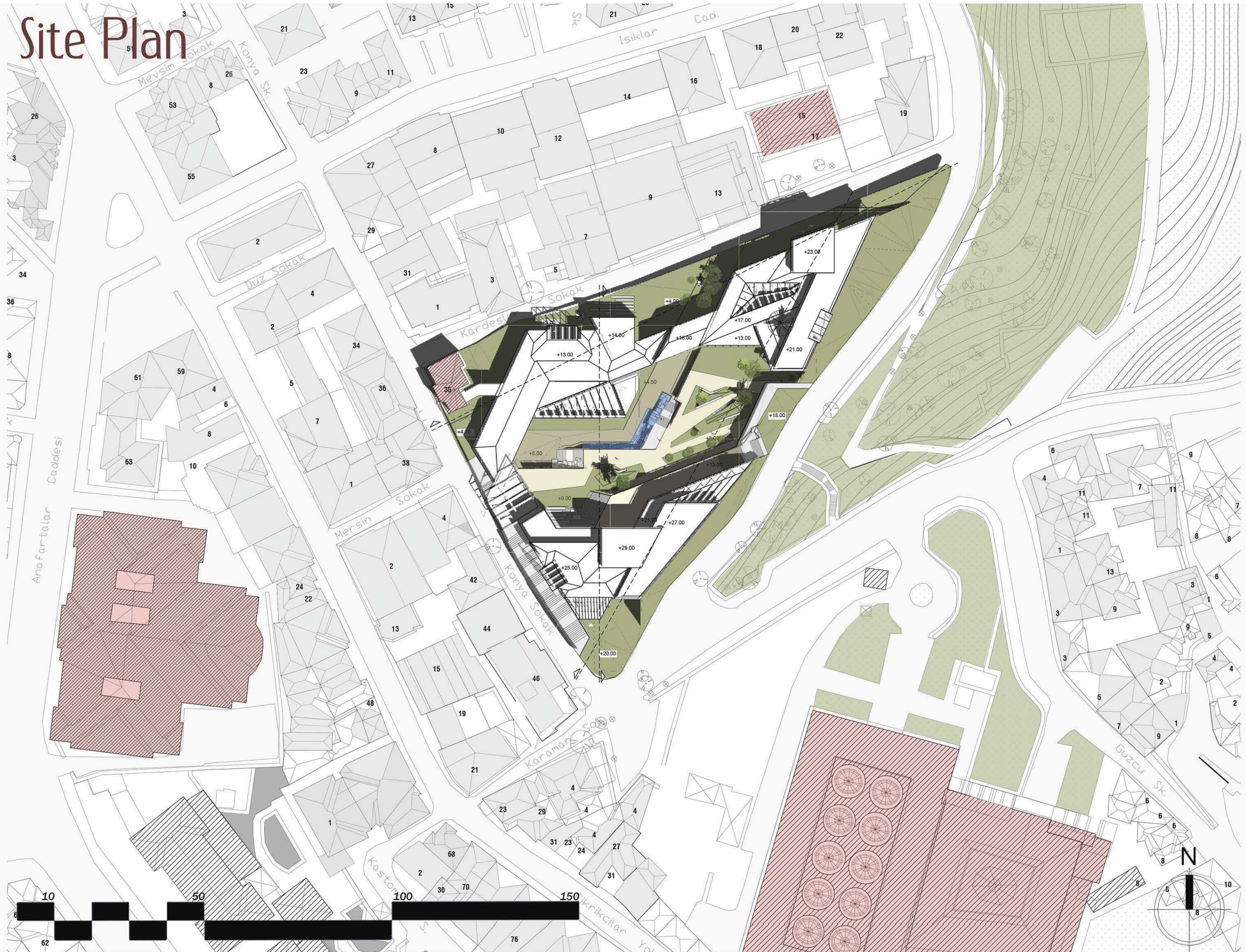
Heritage Ankara unfolds not just as an architectural wonder but as a community-centric endeavor deeply connected to its surroundings. Embracing the essence of Necatibey, the project gives back to the community, providing circular access throughout the site and prioritizing pedestrian-friendly pathways. This thoughtful design fosters seamless integration with the environment, encouraging local engagement and enjoyment of the vibrant spaces. The project extends its impact to neighboring structures, featuring facades that harmonize with the adjacent church and surrounding buildings. Notably, a parametrically designed stained glass facade stands tall, providing a picturesque view for the church, symbolizing a harmonious blend of modernity and tradition



North Elevation



Site Plan



REFERENCES

- Avcı Hosanlı, D., & Altan, T. E. (2018). The Residential architecture of ankara during the 1920s: the housing types in the settlement zones of the new capital city. *Ankara Arařtırmaları Dergisi*, 183–210. <https://hdl.handle.net/11511/84154>
- Aydın, N. B. (2017). A Survey on plan typologies in apartment blocks: the case of Necatibey Neighbourhood, Ankara (1920s-1960s) [M.Arch. - Master of Architecture]. Middle East Technical University.
- Ayhan Koçyiğit, E. S. (2018). A Tale of Ulus square: a critical assessment of continuity, transformation and change in a historic public open space in Ankara [Ph.D. - Doctoral Program]. Middle East Technical University.
- Landorf, Chris (2009).A framework for sustainable heritage management: A study of UK industrial heritage sites. *International Journal of Heritage Studies*, 15 (6), 494-510. doi: 10.1080/13527250903210795
- Mihçiođlu Bilgi, E. (2010). The physical evolution of the historic city of Ankara between 1839 and 1944: a morphological analysis [Ph.D. - Doctoral Program]. Middle East Technical University.
- Ömek, N., Erzurumlu Nafiz Bey Apartmanı, Her Umut Ortak Arar: <https://www.herumutortakarar.com/erzurumlu-nafiz-bey-apartmani/> Tunçer, M. "Ankara Sulu Han (Hasan Pařa Hanı), Tahtakale Çarşısı ve Çevresi: 1929 Yangını Öncesi". *İDEALKENT 2* (2011): 38-59