



**ISAR Summer School 2021: Horrea Agrippiana
ROMAN FORUM, Rome (IT)**

MACHINA

Cathedra CARLO MOLLINO

Giorgio Gasco & Giuseppe Resta

with

Melek Kaynar

Ezgi Nur Güngör

Elif Lelebici

Göksu Erkoç

İlknur Erdoğan



International Society for
Archaeology, Art and Architecture
of Rome



UNIVERSITÀ
DIGITAL SYSTEMS
FIRENZE

CAL POLY
SAN LUIS OBISPO



Politecnico di Bari



Bilkent University



SAPIENZA
UNIVERSITÀ DI ROMA

2nd ISAR Summer School, Architecture and
Archaeology in the ROMAN FORUM, Rome Italy,
June 18-27, 2021

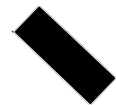
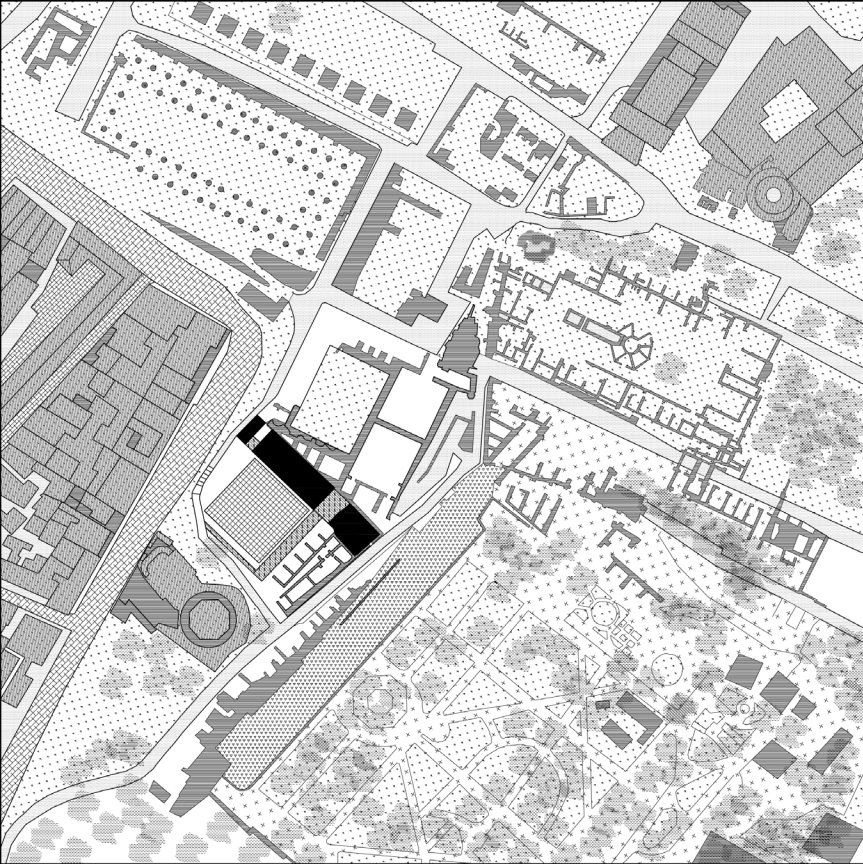
MACHINA

Machina f (genitive machinae)

1. Machine, device

2. (figurative) Scheme, plan, machination, trick, artifice

3. Scaffolding



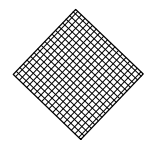
Scaenae Frons



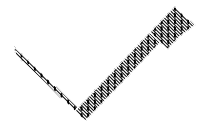
Apopsis



Scalaria

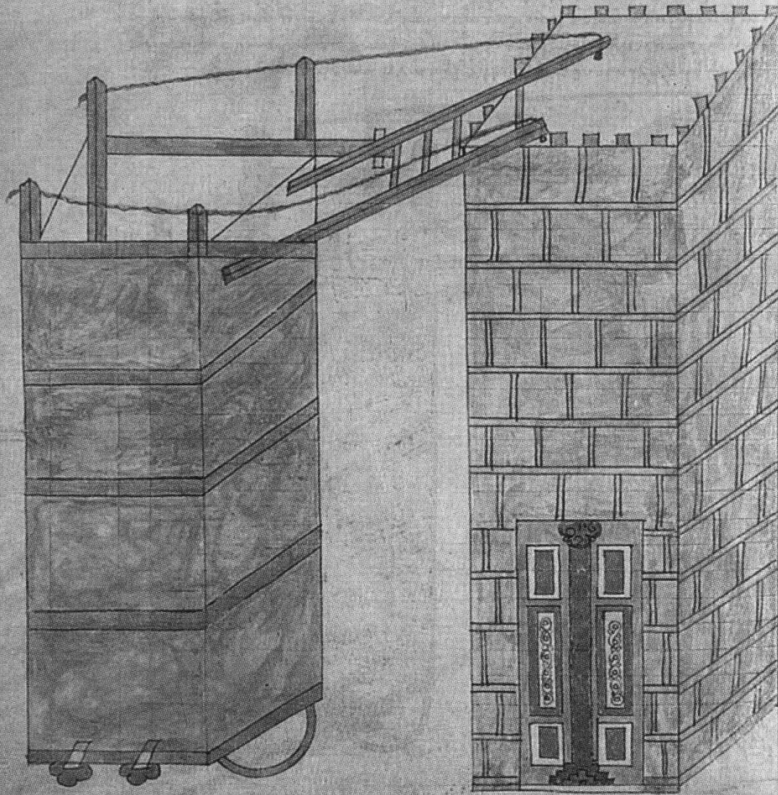


Atrium



Porticus

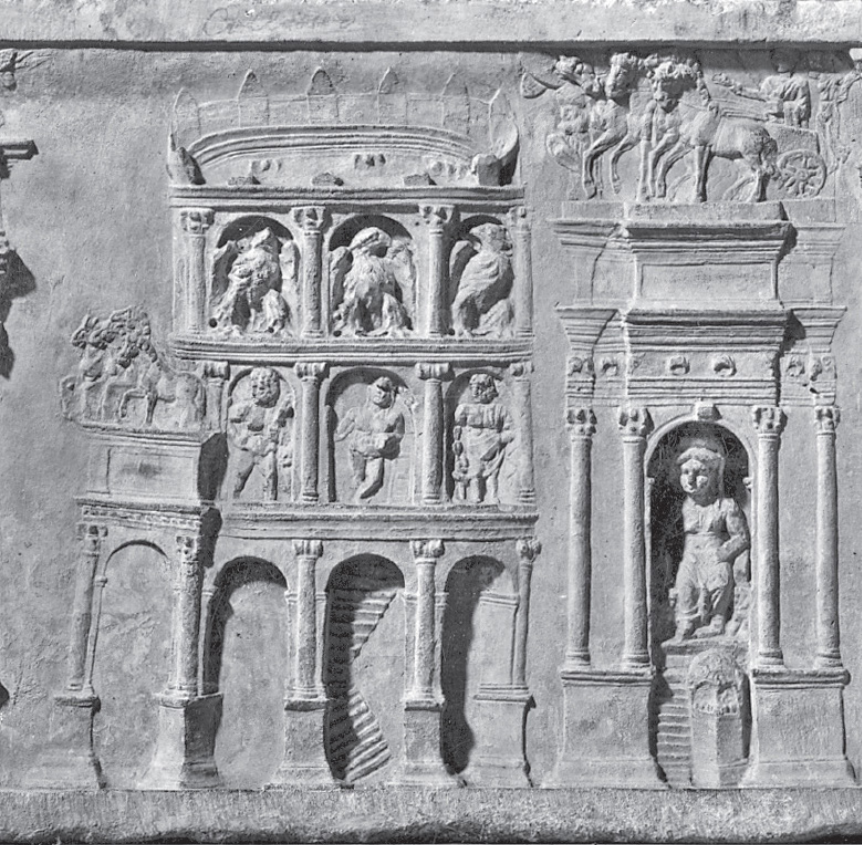




staircase tower - We propose the integration and reconstruction of the original flight of staircase still in situ. The new portion of the intervention is realized in folded steel and enclosed by a light skin that emphasizes its appearance as a tower. A shift from the ordinary function as a vertical circulation element to a symbolic feature as a landmark and as a totemic element.

Apopsis

Siege Tower, 11th or 12th century, Apollodorus of Damascus, Paris, Bibliothèque Nationale



Pavillion - An envelope realized with a light structural skeleton (similar to a scaffolding frame). Within this structure are inserted two levels of decks: circulation paths and supporting structure for prefab units (for archaeologists, scholars, tourists, citizens). A thin scenographic skin re-proposes the articulation of the original facade.

Scaenae Frons

Relief from the tomb of the Haterii (detail).
Rome, Musei Vaticani, Museo Gregoriano Profano



stepped platform - connects the deck at the second level with the upper street of Santa Maria Antiqua. It replaces the roof that today protects the archaeological remains between the southern wall of the Horrea and the upper wall along Santa Maria Antiqua street.

Scalaria

Etruscan Pyramid of Bomarzo
Soriano nel Cimino



courtyard - The courtyard is preserved in its actual conditions, yet it may be conceived as an ephemeral space to allow multiple purposes.

Atrium

La nuova topografia di Roma
Giambattista Nolli, ca. 1692-1756

elevated deck - The deck of the first level of the Pavillion is stretched out to mark the southern side of the courtyard, and to provide a space for a protected archaeological promenade. It ends with a stepped ramp that descends along the western edge of the courtyard and connects with the existing path directed towards the church of San Teodoro.

Porticus



Prospetto d'un regio Cortile nel cui mezzo vi stà una Loggia tra i cui intercolonnj si veggono Fontane, Statue, ed altri ornamenti. Si veggono pure in lontano luoghi rotondi con cristalli secondo il moderno costume.

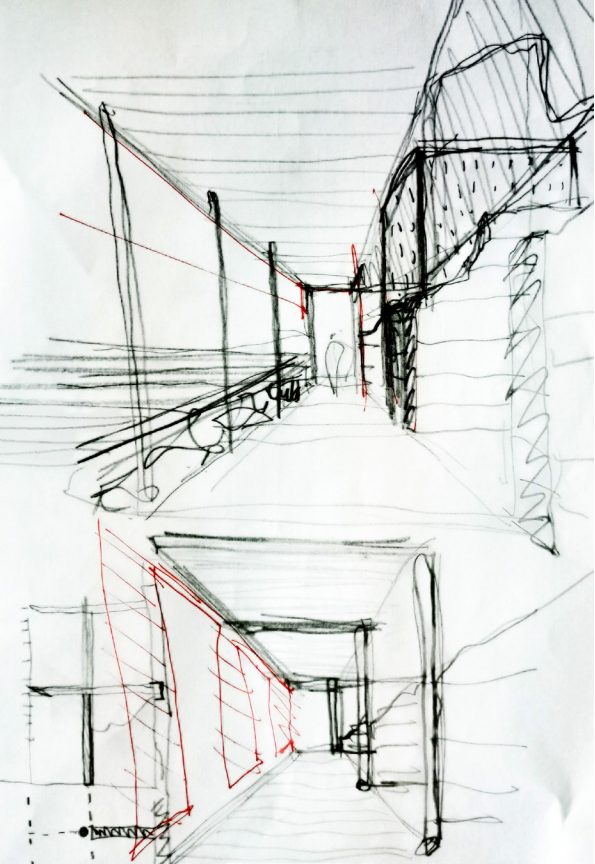
View of a courtyard with a loggia, fountains, statues, and other ornaments

Giovanni Battista Piranesi, ca. 1750

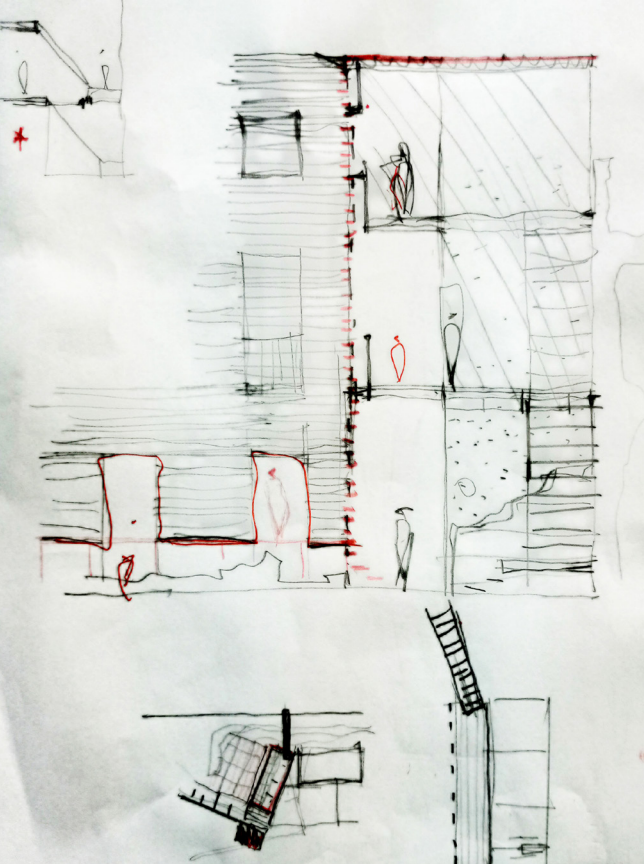
initial sketches: connections with the context



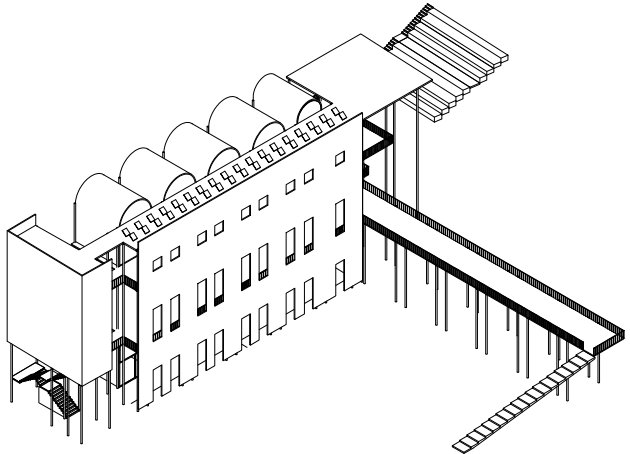
studies of the portico



studies of the facade



Axonometric view of the proposed space



Construction Phases

1. Scaffolding frame + staircases

2. Three units on the ground floor

..... **First year**

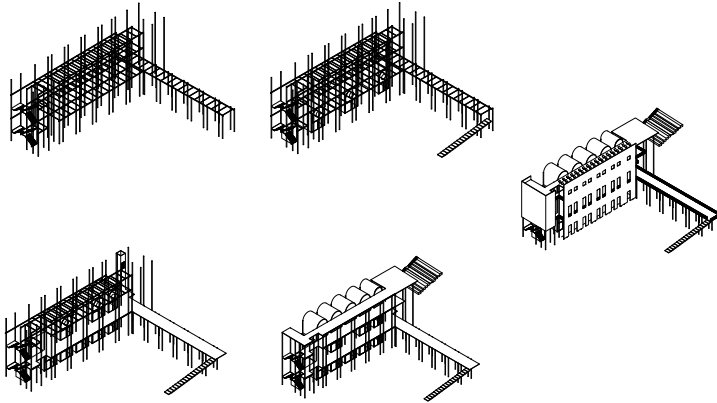
3. Other two units on the ground floor + deck and
three units on the first level + elevator

4. Deck and all the units on the second level +
stepped platform + roof

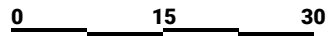
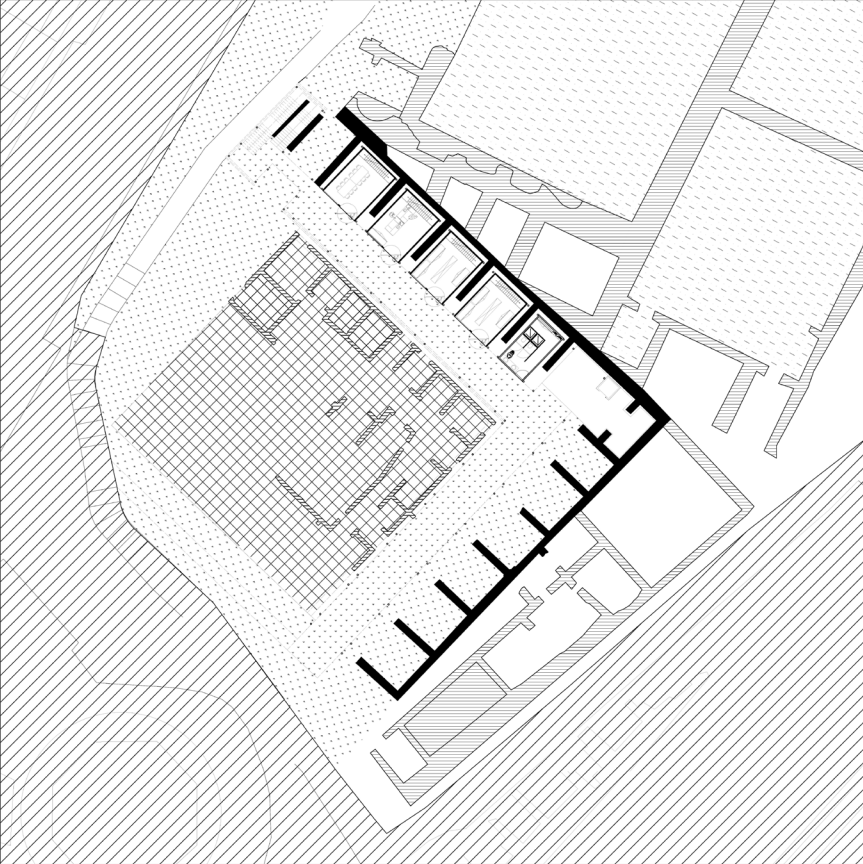
..... **Second year**

5. Facade + envelope of staircases + photovoltaic
panels

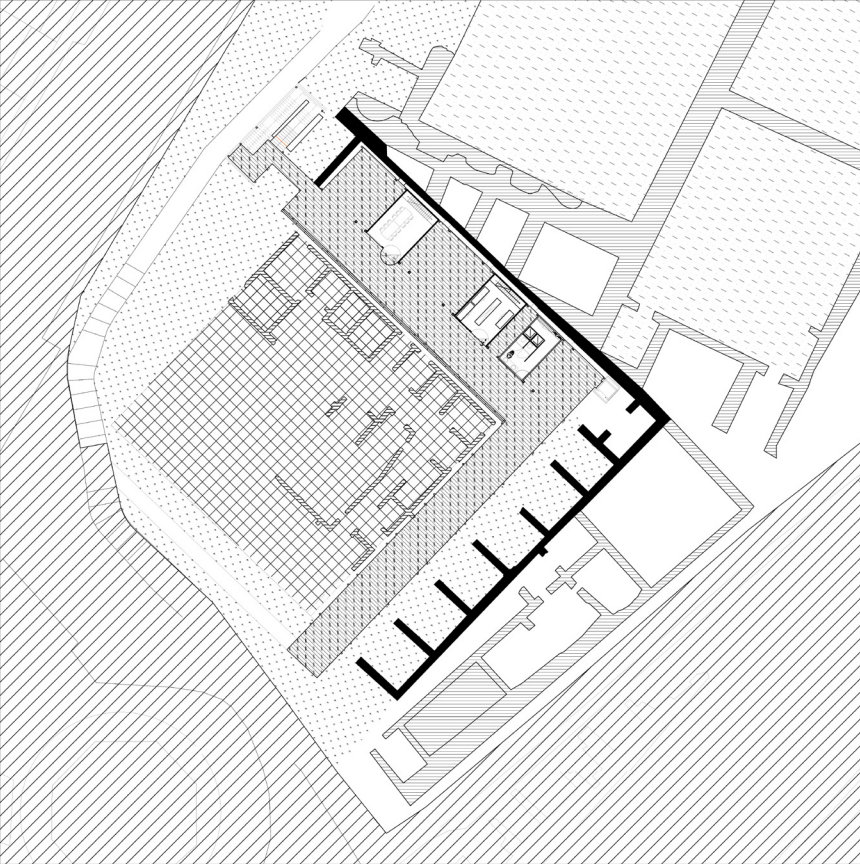
..... **Third year**



Ground floor plan



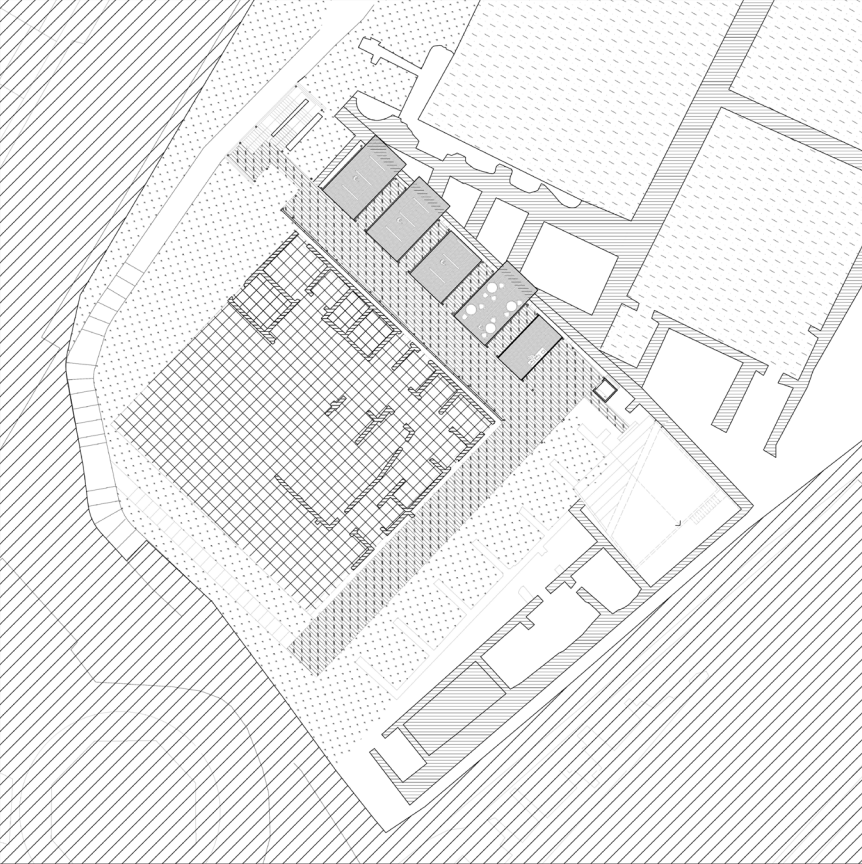
First floor plan



0 15 30



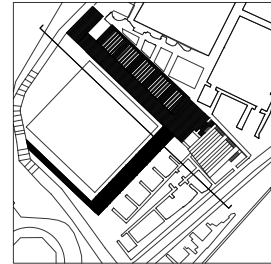
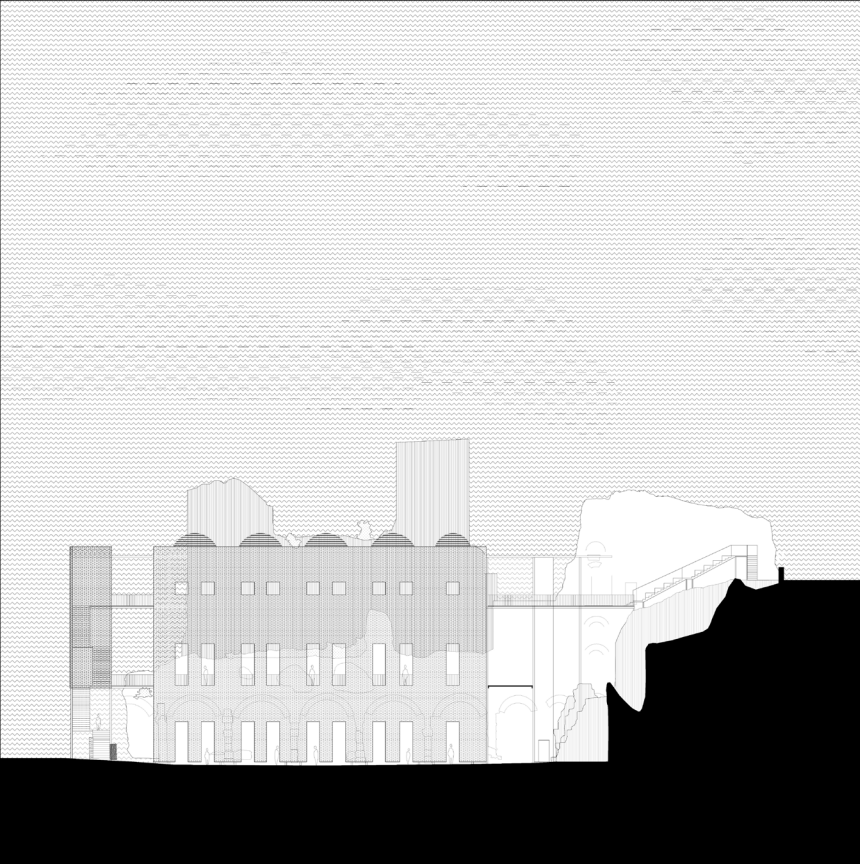
Second floor plan



0 15 30

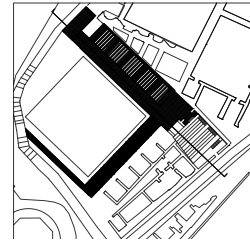
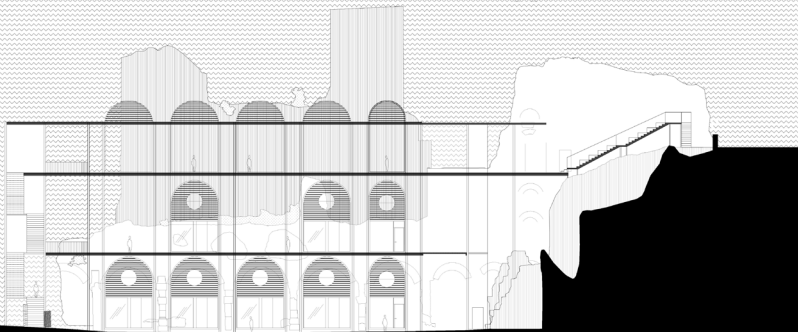


Northeast elevation



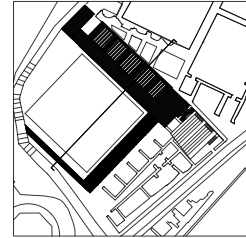
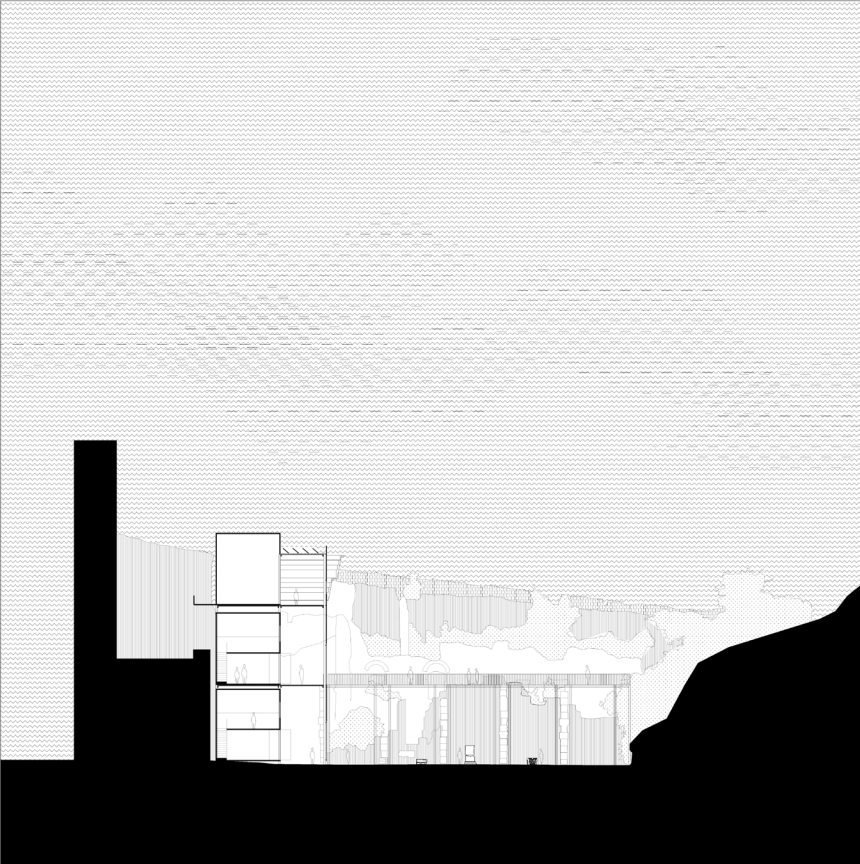
0 15 30

Longitudinal section

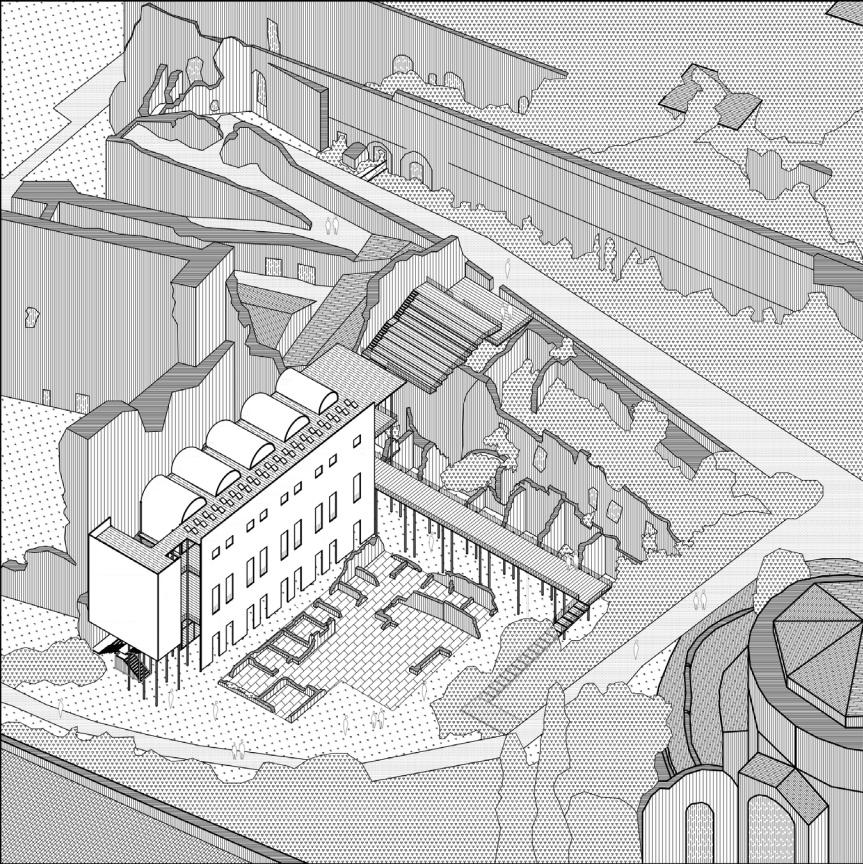


0 15 30

Transversal section



0 15 30



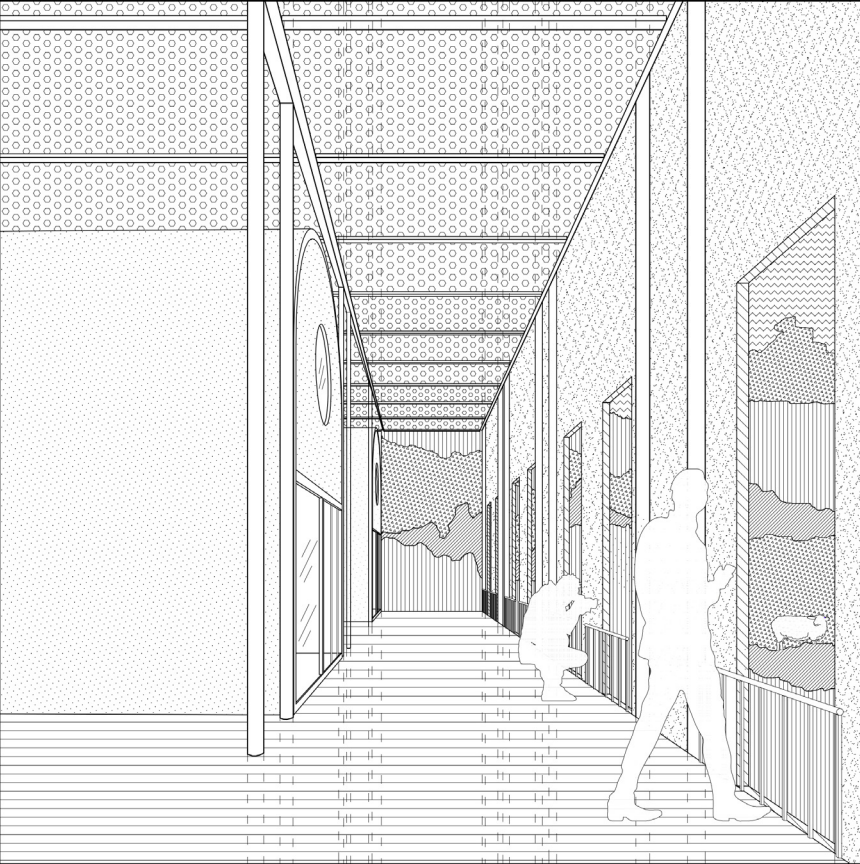
**Axonometric view
of the new Horrea as an urban system**

Inhabit the site

New modalities to practice the Horrea as an urban
space

Experience the site as a repository of wonders

Perspective from the second deck



Walking

Meeting

Lingering

Gazing

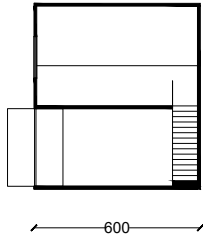
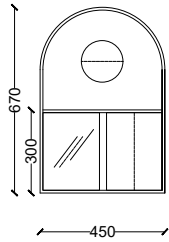
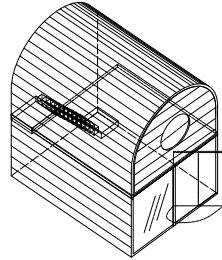
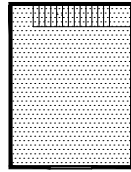
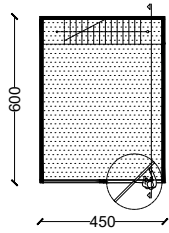
Visiting

Wondering

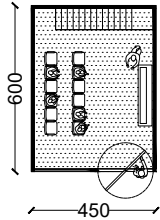
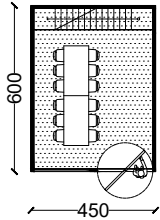
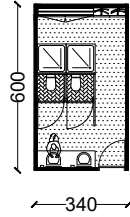
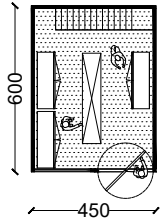
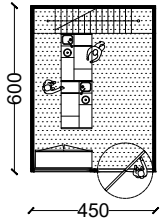
Inhabiting

Working

Built-in units: the basic module



Built-in units: possible functional layouts



Washing

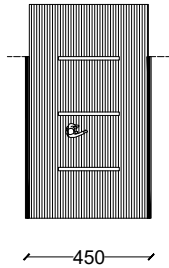
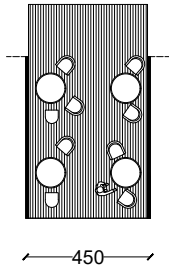
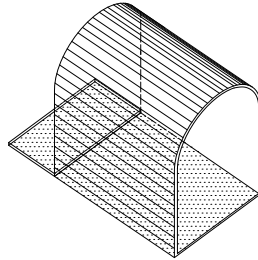
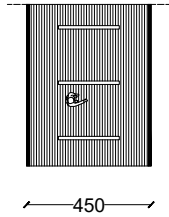
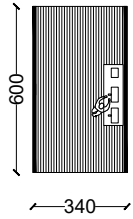
Storage

Work space

Meeting room

Wetroom + Cloakroom

Built-in units: possible functional layouts

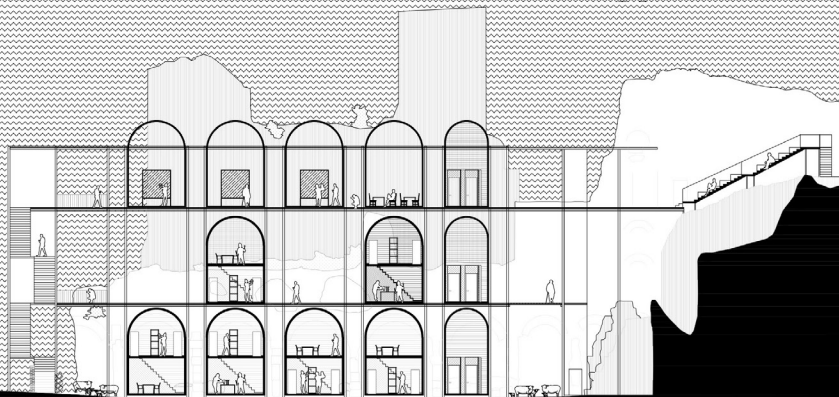


Coffee corner

Exhibition

Panoramic deck

Longitudinal section with built-in units and functional program



1st level

Washing, storage of finds and tools, workspace, cloakroom and wetroom

2nd level

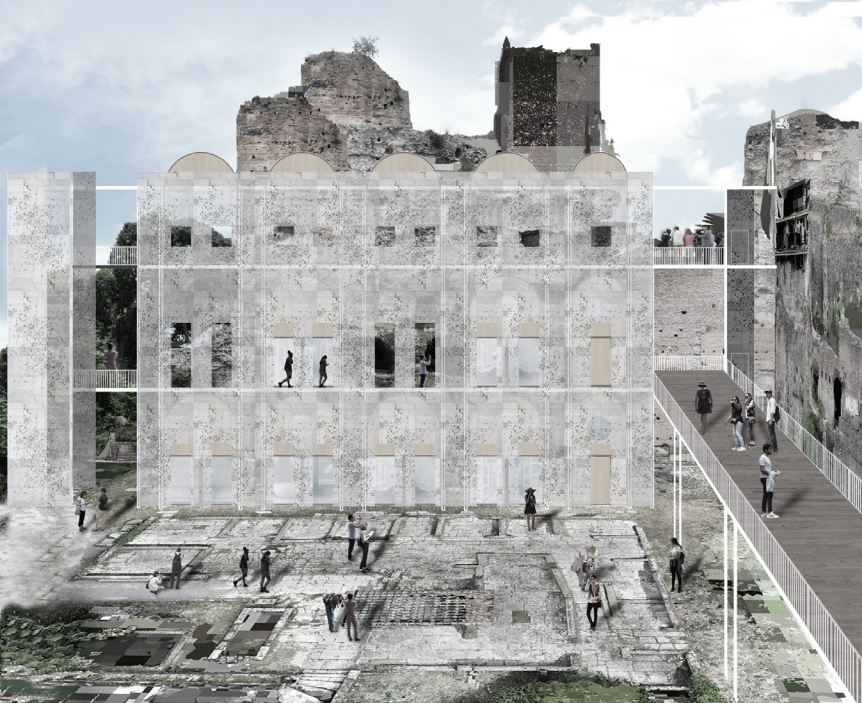
Work space, storage, meeting room, wetroom

3rd level

Exhibition, relax terrace, coffe corner, wetroom

0 12 24

visiting hours for touristic purposes



concerts and theatre



vegetation on the facade



vegetation on the facade (changing season)



videomapping of a hypothesis of reconstruction



